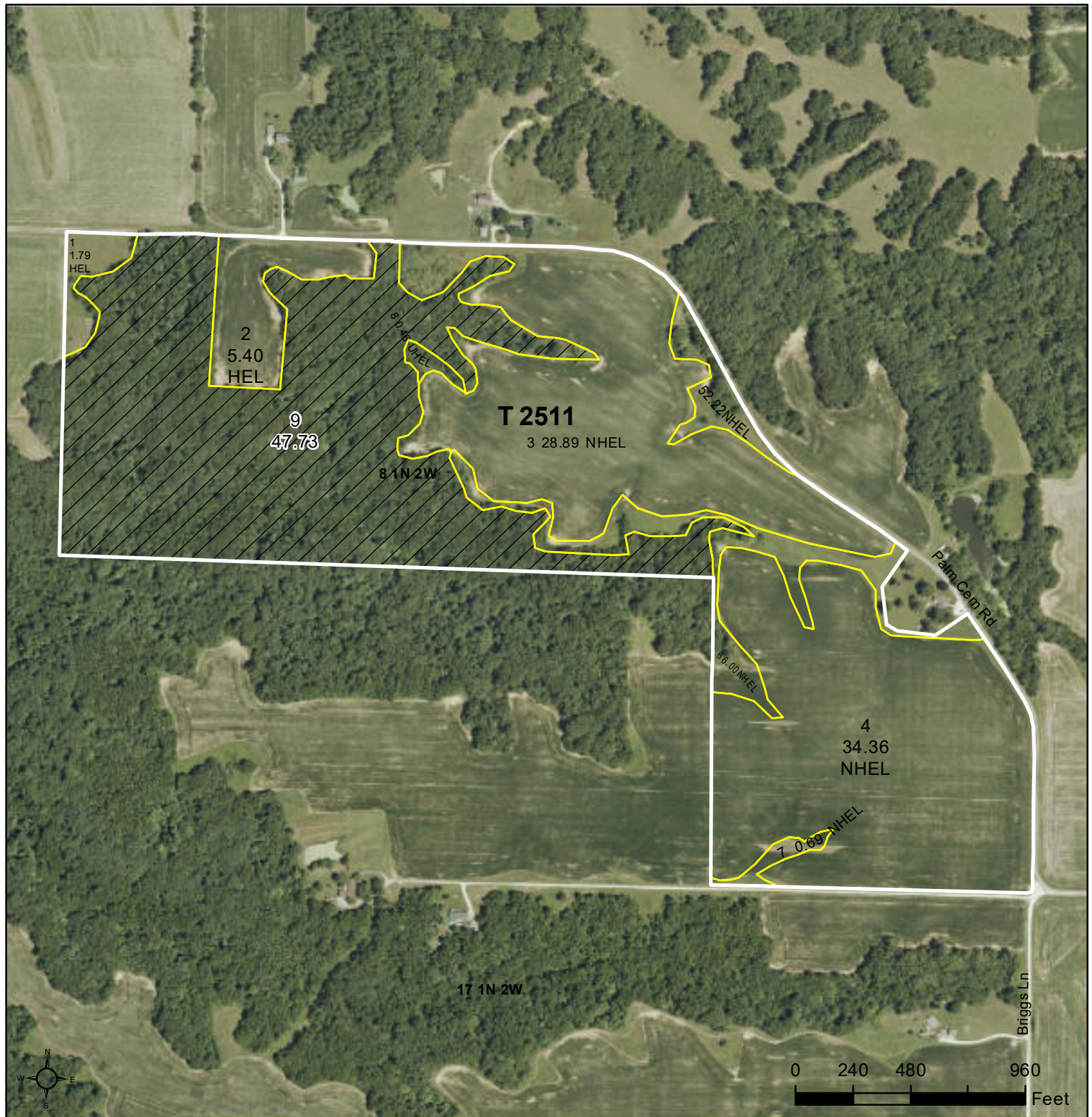




United States  
Department of  
Agriculture

## Schuyler County, Illinois



### Legend

- Tract Boundary
- Non-Cropland
- Cropland
- CRP

### Wetland Determination Identifiers

- Restricted Use
- Limited Restrictions
- Exempt from Conservation Compliance Provisions

2025 Program Year

Map Created January 28, 2025

Farm **3688**  
Tract **2511**

Tract Cropland Total: 79.81 acres

United States Department of Agriculture (USDA) Farm Service Agency (FSA) maps are for FSA Program administration only. This map does not represent a legal survey or reflect actual ownership; rather it depicts the information provided directly from the producer and/or National Agricultural Imagery Program (NAIP) imagery. The producer accepts the data 'as is' and assumes all risks associated with its use. USDA-FSA assumes no responsibility for actual or consequential damage incurred as a result of any user's reliance on this data outside FSA Programs. Wetland identifiers do not represent the size, shape, or specific determination of the area. Refer to your original determination (CPA-026 and attached maps) for exact boundaries and determinations or contact USDA Natural Resources Conservation Service (NRCS).





United States  
Department of  
Agriculture

## Schuyler County, Illinois



### Legend

- Tract Boundary
- Non-Cropland
- Cropland
- CRP

### Wetland Determination Identifiers

- Restricted Use
- Limited Restrictions
- Exempt from Conservation Compliance Provisions

2025 Program Year

Map Created January 28, 2025

Farm **3688**  
Tract **1628**

Tract Cropland Total: 42.98 acres

United States Department of Agriculture (USDA) Farm Service Agency (FSA) maps are for FSA Program administration only. This map does not represent a legal survey or reflect actual ownership; rather it depicts the information provided directly from the producer and/or National Agricultural Imagery Program (NAIP) imagery. The producer accepts the data 'as is' and assumes all risks associated with its use. USDA-FSA assumes no responsibility for actual or consequential damage incurred as a result of any user's reliance on this data outside FSA Programs. Wetland identifiers do not represent the size, shape, or specific determination of the area. Refer to your original determination (CPA-026 and attached maps) for exact boundaries and determinations or contact USDA Natural Resources Conservation Service (NRCS).



## Abbreviated 156 Farm Record

Operator Name :  
CRP Contract Number(s) : 11381  
Recon ID : None  
Transferred From : None  
ARCPLC G//F Eligibility : Eligible

## Farm Land Data

| Farmland           | Cropland           | DCP Cropland           | WBP  | EWP            | WRP  | GRP  | Sugarcane | Farm Status          | Number Of Tracts |
|--------------------|--------------------|------------------------|------|----------------|------|------|-----------|----------------------|------------------|
| 183.51             | 122.79             | 122.79                 | 0.00 | 0.00           | 0.00 | 0.00 | 0.0       | Active               | 2                |
| State Conservation | Other Conservation | Effective DCP Cropland |      | Double Cropped |      | CRP  | MPL       | DCP Ag.Rel. Activity | SOD              |
| 0.00               | 0.00               | 122.37                 |      | 0.00           |      | 0.42 | 0.00      | 0.00                 | 0.00             |

## Crop Election Choice

| ARC Individual | ARC County | Price Loss Coverage |
|----------------|------------|---------------------|
| None           | SOYBN      | WHEAT, CORN         |

## DCP Crop Data

| Crop Name    | Base Acres    | CCC-505 CRP Reduction Acres | PLC Yield | HIP |
|--------------|---------------|-----------------------------|-----------|-----|
| Wheat        | 1.96          | 0.00                        | 45        |     |
| Corn         | 60.76         | 0.00                        | 121       |     |
| Soybeans     | 59.28         | 0.00                        | 40        | 0   |
| <b>TOTAL</b> | <b>122.00</b> | <b>0.00</b>                 |           |     |

## NOTES

Tract Number : 1628

Description : J8-1 WOODSTOCK SEC. 17  
FSA Physical Location : ILLINOIS/SCHUYLER  
ANSI Physical Location : ILLINOIS/SCHUYLER  
BIA Unit Range Number :  
HEL Status : NHEL: No agricultural commodity planted on undetermined fields  
Wetland Status : Wetland determinations not complete  
WL Violations : None  
Owners :  
Other Producers : None  
Recon ID : None

## Tract Land Data

| Farm Land | Cropland | DCP Cropland | WBP  | EWP  | WRP  | GRP  | Sugarcane |
|-----------|----------|--------------|------|------|------|------|-----------|
| 55.97     | 42.98    | 42.98        | 0.00 | 0.00 | 0.00 | 0.00 | 0.0       |



**Abbreviated 156 Farm Record**

**Tract 1628 Continued ...**

| State Conservation | Other Conservation | Effective DCP Cropland | Double Cropped | CRP  | MPL  | DCP Ag. Rel Activity | SOD  |
|--------------------|--------------------|------------------------|----------------|------|------|----------------------|------|
| 0.00               | 0.00               | 42.56                  | 0.00           | 0.42 | 0.00 | 0.00                 | 0.00 |

**DCP Crop Data**

| Crop Name    | Base Acres   | CCC-505 CRP Reduction Acres | PLC Yield |
|--------------|--------------|-----------------------------|-----------|
| Wheat        | 0.68         | 0.00                        | 40        |
| Corn         | 21.16        | 0.00                        | 121       |
| Soybeans     | 20.65        | 0.00                        | 37        |
| <b>TOTAL</b> | <b>42.49</b> | <b>0.00</b>                 |           |

**NOTES**

**Tract Number : 2511**

**Description :** J7-4 WOODSTOCK SEC. 8  
**FSA Physical Location :** ILLINOIS/SCHUYLER  
**ANSI Physical Location :** ILLINOIS/SCHUYLER  
**BIA Unit Range Number :**  
**HEL Status :** HEL field on tract.Conservation system being actively applied  
**Wetland Status :** Wetland determinations not complete  
**WL Violations :** None  
**Owners :**  
**Other Producers :** None  
**Recon ID :** None

**Tract Land Data**

| Farm Land          | Cropland           | DCP Cropland           | WBP            | EWP  | WRP  | GRP                  | Sugarcane |
|--------------------|--------------------|------------------------|----------------|------|------|----------------------|-----------|
| 127.54             | 79.81              | 79.81                  | 0.00           | 0.00 | 0.00 | 0.00                 | 0.0       |
| State Conservation | Other Conservation | Effective DCP Cropland | Double Cropped | CRP  | MPL  | DCP Ag. Rel Activity | SOD       |
| 0.00               | 0.00               | 79.81                  | 0.00           | 0.00 | 0.00 | 0.00                 | 0.00      |

**DCP Crop Data**

| Crop Name    | Base Acres   | CCC-505 CRP Reduction Acres | PLC Yield |
|--------------|--------------|-----------------------------|-----------|
| Wheat        | 1.28         | 0.00                        | 48        |
| Corn         | 39.60        | 0.00                        | 121       |
| Soybeans     | 38.63        | 0.00                        | 41        |
| <b>TOTAL</b> | <b>79.51</b> | <b>0.00</b>                 |           |

**NOTES**

ILLINOIS  
SCHUYLER

Form: FSA-156EZ



United States Department of Agriculture  
Farm Service Agency

**FARM : 3688**

**Prepared : 2/19/25 2:05 PM CST**

**Crop Year : 2025**

## Abbreviated 156 Farm Record

*In accordance with Federal civil rights law and U.S. Department of Agriculture (USDA) civil rights regulations and policies, the USDA, its Agencies, offices, and employees, and institutions participating in or administering USDA programs are prohibited from discriminating based on race, color, national origin, religion, sex, gender identity (including gender expression), sexual orientation, disability, age, marital status, family/parental status, income derived from a public assistance program, political beliefs, or reprisal or retaliation for prior civil rights activity, in any program or activity conducted or funded by USDA (not all bases apply to all programs). Remedies and complaint filing deadlines vary by program or incident.*

*Persons with disabilities who require alternative means of communication for program information (e.g., Braille, large print, audiotape, American Sign Language, etc.) should contact the responsible Agency or USDA's TARGET Center at (202) 720-2600 (voice and TTY) or contact USDA through the Federal Relay Service at (800) 877-8339. Additionally, program information may be made available in languages other than English.*

*To file a program discrimination complaint, complete the USDA Program Discrimination Complaint Form, AD-3027, found online at [http://www.ascr.usda.gov/complaint\\_filing\\_cust.html](http://www.ascr.usda.gov/complaint_filing_cust.html) and at any USDA office or write a letter addressed to USDA and provide in the letter all of the information requested in the form. To request a copy of the complaint form, call (866) 632-9992. Submit your completed form or letter to USDA by: (1) mail: U.S. Department of Agriculture Office of the Assistant Secretary for Civil Rights 1400 Independence Avenue, SW Washington, D.C. 20250-9410; (2) fax: (202) 690-7442; or (3) e-mail: [program.intake@usda.gov](mailto:program.intake@usda.gov). USDA is an equal opportunity provider, employer, and lender.*



To file a program discrimination complaint, complete the USDA Program Discrimination Complaint Form, AD-3027, found online at [http://www.ascr.usda.gov/complaint\\_filing\\_cust.html](http://www.ascr.usda.gov/complaint_filing_cust.html) and at any USDA office or write a letter addressed to USDA and provide in the letter all of the information requested in the form. To request a copy of the complaint form, call (866) 632-9992. Submit your completed form or letter to USDA by: (1) mail: U.S. Department of Agriculture Office of the Assistant Secretary for Civil Rights 1400 Independence Avenue, SW Washington, D.C. 20250-9410; (2) fax: (202) 690-7442; or (3) email: [program.intake@usda.gov](mailto:program.intake@usda.gov). USDA is an equal opportunity provider, employer, and lender.