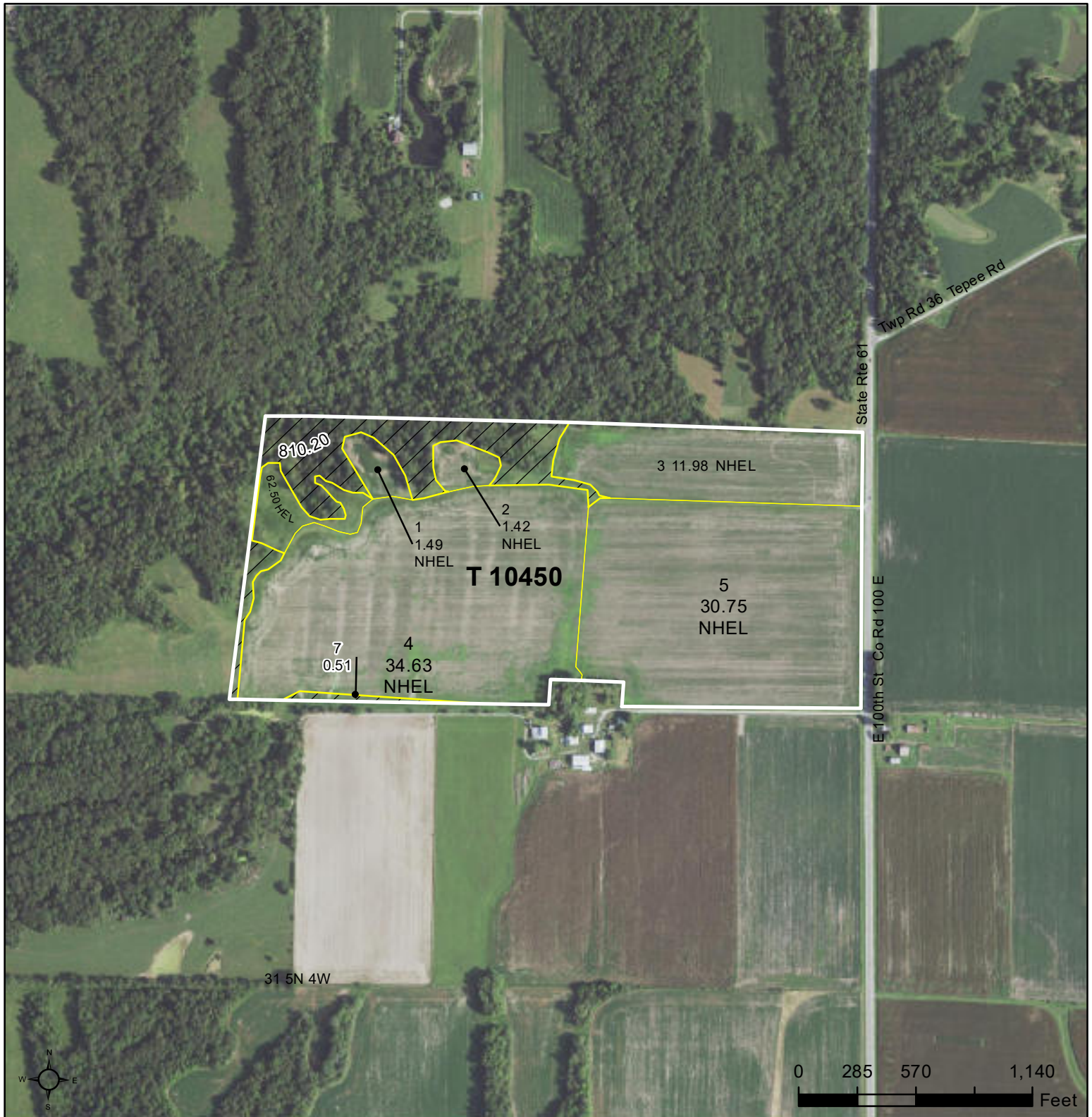




United States
Department of
Agriculture

McDonough County, Illinois



Common Land Unit

	Non-Cropland
	Cropland

Tract Boundary
 Roads

Wetland Determination Identifiers

- Restricted Use
- Limited Restrictions
- Exempt from Conservation Compliance Provisions

Tract Cropland Total: 82.77 acres

2023 Program Year
Map Created November 29, 2022

Farm **8331**
Tract **10450**

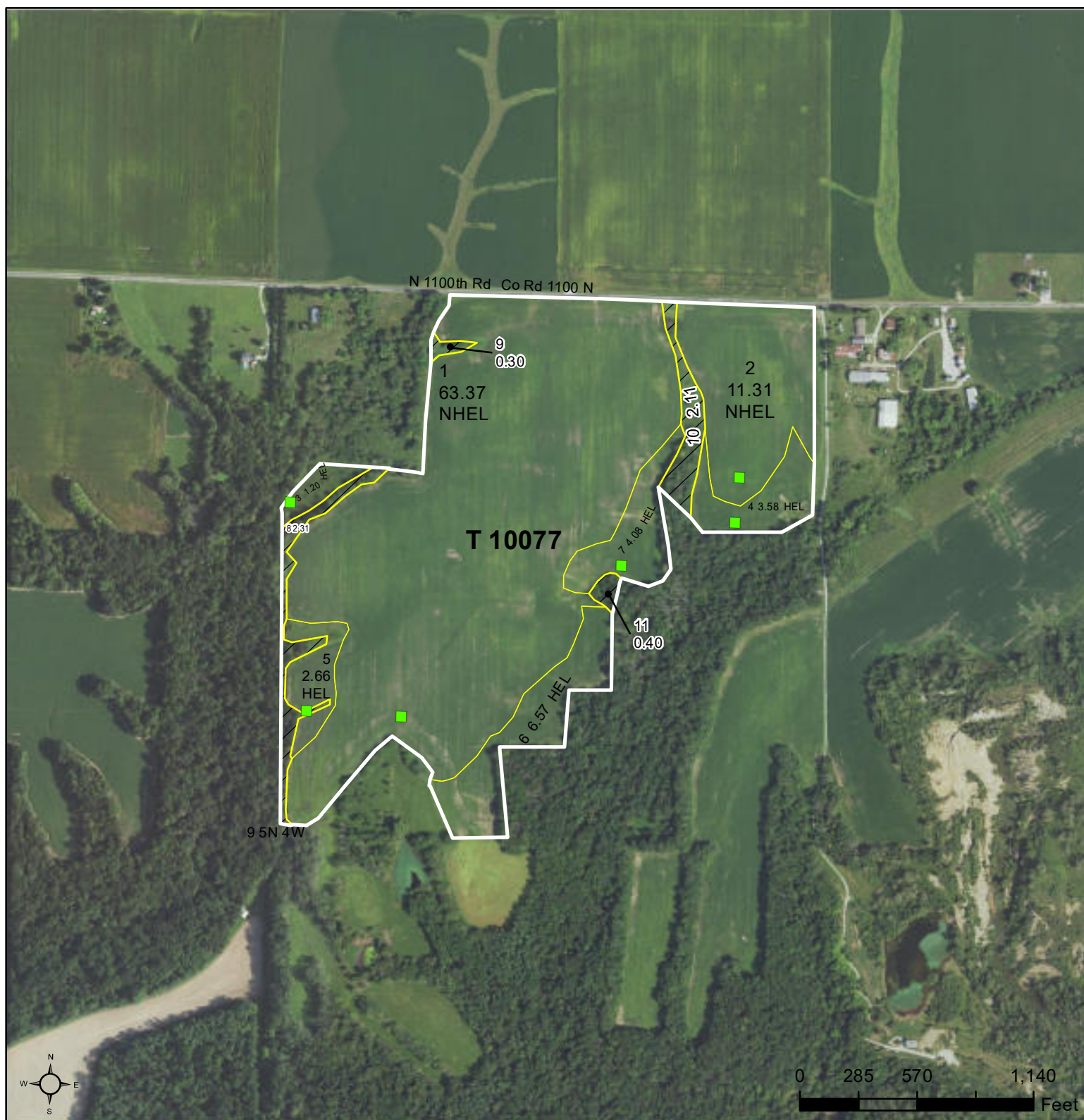
IL109_T10450

United States Department of Agriculture (USDA) Farm Service Agency (FSA) maps are for FSA Program administration only. This map does not represent a legal survey or reflect actual ownership; rather it depicts the information provided directly from the producer and/or National Agricultural Imagery Program (NAIP) imagery. The producer accepts the data 'as is' and assumes all risks associated with its use. USDA-FSA assumes no responsibility for actual or consequential damage incurred as a result of any user's reliance on this data outside FSA Programs. Wetland identifiers do not represent the size, shape, or specific determination of the area. Refer to your original determination (CPA-026 and attached maps) for exact boundaries and determinations or contact USDA Natural Resources Conservation Service (NRCS).



United States
Department of
Agriculture

McDonough County, Illinois



Common Land Unit Tract Boundary
 Non-Cropland
 Cropland

Wetland Determination Identifiers

- Restricted Use
- ▲ Limited Restrictions
- Exempt from Conservation Compliance Provisions

Tract Cropland Total: 92.77 acres

2023 Program Year

Map Created November 29, 2022

Farm 8331
Tract 10077

IL109_T10077

United States Department of Agriculture (USDA) Farm Service Agency (FSA) maps are for FSA Program administration only. This map does not represent a legal survey or reflect actual ownership; rather it depicts the information provided directly from the producer and/or National Agricultural Imagery Program (NAIP) imagery. The producer accepts the data 'as is' and assumes all risks associated with its use. USDA-FSA assumes no responsibility for actual or consequential damage incurred as a result of any user's reliance on this data outside FSA Programs. Wetland identifiers do not represent the size, shape, or specific determination of the area. Refer to your original determination (CPA-026 and attached maps) for exact boundaries and determinations or contact USDA Natural Resources Conservation Service (NRCS).



United States
Department of
Agriculture

Hancock County, Illinois

WHT,W=Wheat,SRW,GR C=Corn,Yel,GR SB,S,B=Soybeans,Com,GR
WW=MixFG,IGS,LS Hay=MixFG,IGS,FG Alf=Alfalfa,FG Pasture,Past=MixFG,IGS,GZ
Non-Irrigated unless noted on the map



Common Land Unit Tract Boundary
/ / Non-Cropland
Cropland

Wetland Determination Identifiers

- Restricted Use
- ▽ Limited Restrictions
- Exempt from Conservation Compliance Provisions

Tract Cropland Total: 74.50 acres

2023 Program Year

Map Created November 22, 2022

Farm 10297
Tract 1821

IL067_T1821

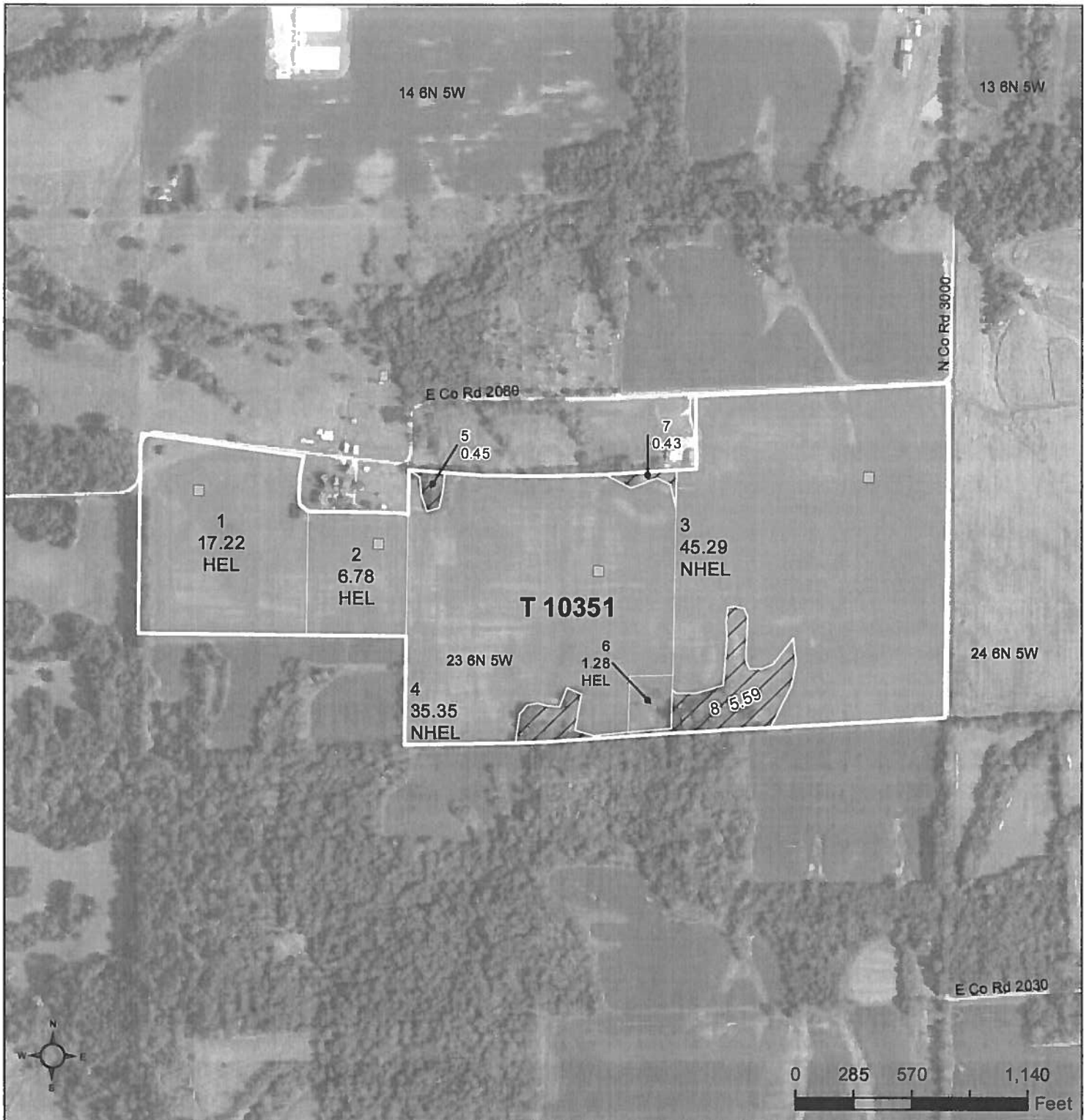
United States Department of Agriculture (USDA) Farm Service Agency (FSA) maps are for FSA Program administration only. This map does not represent a legal survey or reflect actual ownership; rather it depicts the information provided directly from the producer and/or National Agricultural Imagery Program (NAIP) imagery. The producer accepts the data 'as is' and assumes all risks associated with its use. USDA-FSA assumes no responsibility for actual or consequential damage incurred as a result of any user's reliance on this data outside FSA Programs. Wetland identifiers do not represent the size, shape, or specific determination of the area. Refer to your original determination (CPA-026 and attached maps) for exact boundaries and determinations or contact USDA Natural Resources Conservation Service (NRCS).



United States
Department of
Agriculture

Hancock County, Illinois

WHT,W=Wheat,SRW,GR C=Corn,Yel,GR SB,S,B=Soybeans,Com,GR
WW=MixFG,IGS,LS Hay=MixFG,IGS,FG Alf=Alfalfa,FG Pasture,Past=MixFG,IGS,GZ
Non-Irrigated unless noted on the map



Common Land Unit

Non-Cropland
Cropland

Roads

Tract Boundary

2023 Program Year

Map Created November 22, 2022

Farm 10297

Tract 10351

Wetland Determination Identifiers

- Restricted Use
- ▽ Limited Restrictions
- Exempt from Conservation Compliance Provisions

Tract Cropland Total: 105.92 acres

IL067_T10351

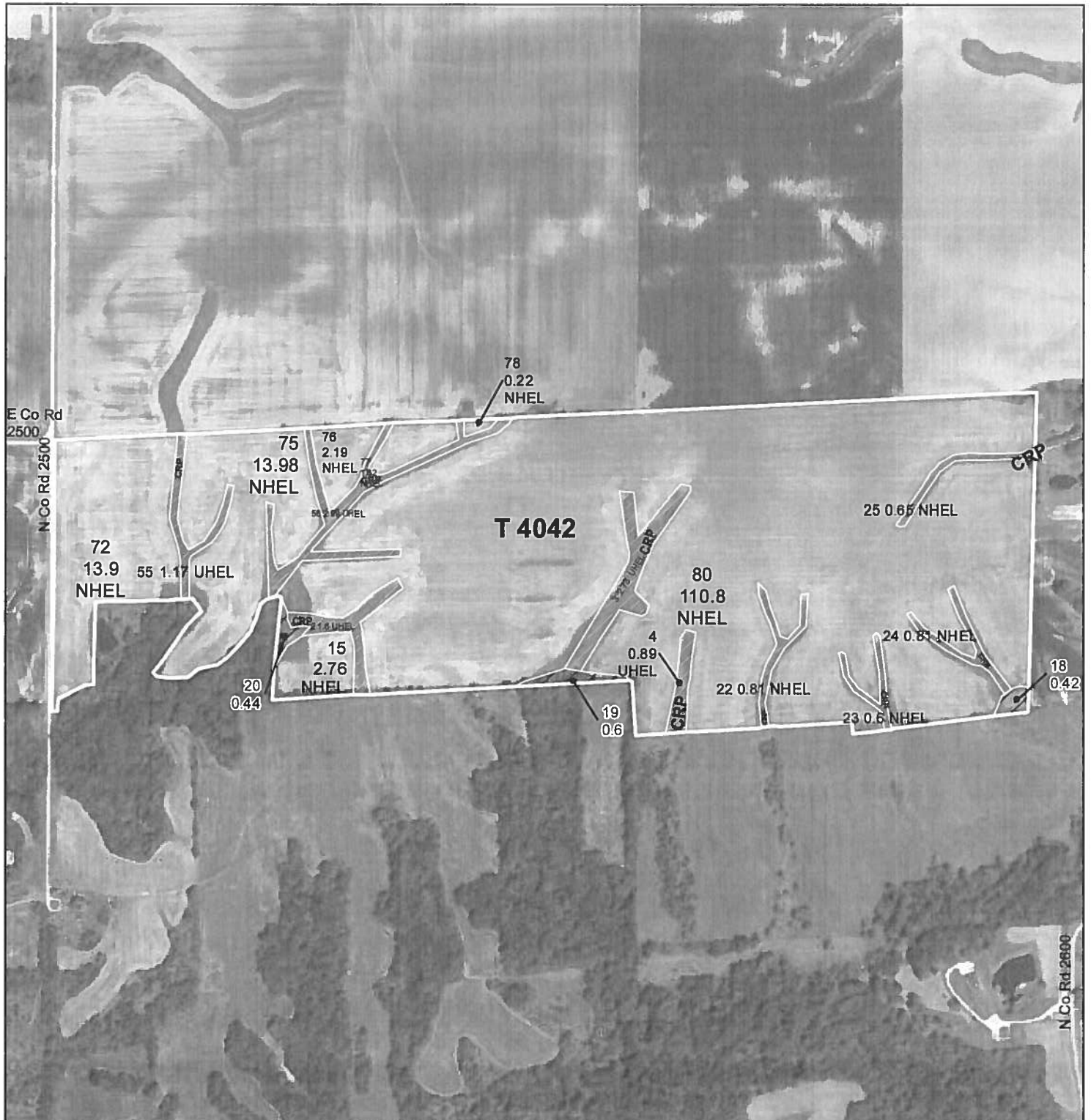
United States Department of Agriculture (USDA) Farm Service Agency (FSA) maps are for FSA Program administration only. This map does not represent a legal survey or reflect actual ownership; rather it depicts the information provided directly from the producer and/or National Agricultural Imagery Program (NAIP) imagery. The producer accepts the data 'as is' and assumes all risks associated with its use. USDA-FSA assumes no responsibility for actual or consequential damage incurred as a result of any user's reliance on this data outside FSA Programs. Wetland identifiers do not represent the size, shape, or specific determination of the area. Refer to your original determination (CPA-026 and attached maps) for exact boundaries and determinations or contact USDA Natural Resources Conservation Service (NRCS).



United States
Department of
Agriculture

Hancock County, Illinois

WHT,W=Wheat,SRW,GR C=Corn,Yel,GR SB,S,B=Soybeans,Com,GR
WW=MixFG,IGS,LS Hay=MixFG,IGS,FG Alf=Alfalfa,FG Pasture,Past=MixFG,IGS,GZ
Non-Irrigated unless noted on the map



Common Land Unit	
Non-Cropland	Conservation Reserve Program
clu_classification_code	
Cropland	Tract Boundary
street100k_jl_utm	

Wetland Determination Identifiers

- Restricted Use
- ▽ Limited Restrictions
- Exempt from Conservation Compliance Provisions



Tract Cropland Total: 157.72 acres

2023 Program Year

Map Created December 02, 2022

Farm 10297

Tract 4042



United States Department of Agriculture (USDA) Farm Service Agency (FSA) maps are for FSA Program administration only. This map does not represent a legal survey or reflect actual ownership; rather it depicts the information provided directly from the producer and/or National Agricultural Imagery Program (NAIP) imagery. The producer accepts the data 'as is' and assumes all risks associated with its use. USDA-FSA assumes no responsibility for actual or consequential damage incurred as a result of any user's reliance on this data outside FSA Programs. Wetland identifiers do not represent the size, shape, or specific determination of the area. Refer to your original determination (CPA-026 and attached maps) for exact boundaries and determinations or contact USDA Natural Resources Conservation Service (NRCS).



United States
Department of
Agriculture

Hancock County, Illinois

WHT,W=Wheat,SRW,GR C=Corn,Yel,GR SB,S,B=Soybeans,Com,GR
WW=MixFG,IGS,LS Hay=MixFG,IGS,FG Alf=Alfalfa,FG Pasture,Past=MixFG,IGS,GZ
Non-Irrigated unless noted on the map



Common Land Unit

Non-Cropland
Cropland

Roads

Tract Boundary

Wetland Determination Identifiers

- Restricted Use
- ▽ Limited Restrictions
- Exempt from Conservation Compliance Provisions

Tract Cropland Total: 132.90 acres

2023 Program Year

Map Created November 22, 2022

Farm 10297
Tract 10833

IL067_T10833

United States Department of Agriculture (USDA) Farm Service Agency (FSA) maps are for FSA Program administration only. This map does not represent a legal survey or reflect actual ownership; rather it depicts the information provided directly from the producer and/or National Agricultural Imagery Program (NAIP) imagery. The producer accepts the data 'as is' and assumes all risks associated with its use. USDA-FSA assumes no responsibility for actual or consequential damage incurred as a result of any user's reliance on this data outside FSA Programs. Wetland identifiers do not represent the size, shape, or specific determination of the area. Refer to your original determination (CPA-026 and attached maps) for exact boundaries and determinations or contact USDA Natural Resources Conservation Service (NRCS).

In accordance with Federal civil rights law and U.S. Department of Agriculture (USDA) civil rights regulations and policies, the USDA, its Agencies, offices, and employees, and institutions participating in or administering USDA programs are prohibited from discriminating based on race, color, national origin, religion, sex, gender identity (including gender expression), sexual orientation, disability, age, marital status, family/parental status, income derived from a public assistance program, political beliefs, or reprisal or retaliation for prior civil rights activity, in any program or activity conducted or funded by USDA (not all bases apply to all programs). Remedies and complaint filing deadlines vary by program or incident.

Persons with disabilities who require alternative means of communication for program information (e.g., Braille, large print, audiotope, American Sign Language, etc.) should contact the responsible Agency or USDA's TARGET Center at (202) 720-2600 (voice and TTY) or contact USDA through the Federal Relay Service at (800) 877-8339. Additionally, program information may be made available in languages other than English.

To file a program discrimination complaint, complete the USDA Program Discrimination Complaint Form, AD-3027, found online at http://www.ascr.usda.gov/complaint_filing_cust.html and at any USDA office or write a letter addressed to USDA and provide in the letter all of the information requested in the form. To request a copy of the complaint form, call (866) 632-9929. Submit your completed form or letter to USDA by: (1) mail: U.S. Department of Agriculture Office of the Assistant Secretary for Civil Rights 1400 Independence Avenue, SW Washington, D.C. 20250-9410; (2) fax: (202) 690-7442; or (3) email: program.intake@usda.gov. USDA is an equal opportunity provider, employer, and lender.

CONTINUATION OF ITEM 10 – Identification of CRP Land

[illegible]

CRP-1 (07-06-20)		U.S. DEPARTMENT OF AGRICULTURE Commodity Credit Corporation	
CONSERVATION RESERVE PROGRAM CONTRACT		1. ST. & CO. CODE & ADMIN. LOCATION 17 067	
		2. SIGN-UP NUMBER 55	
5A. COUNTY FSA OFFICE ADDRESS (Include Zip Code) HANCOCK COUNTY FARM SERVICE AGENCY 102 BUCHANAN ST. CARTHAGE, IL62321-1204		3. CONTRACT NUMBER 11674A	
		4. ACRES FOR ENROLLMENT 4.16	
5B. COUNTY FSA OFFICE PHONE NUMBER (Include Area Code): (217) 357-2188 x2		6. TRACT NUMBER 4042	
		7. CONTRACT PERIOD FROM: (MM-DD-YYYY) 10-01-2021 TO: (MM-DD-YYYY) 09-30-2031	
8. SIGNUP TYPE: Continuous			
THIS CONTRACT is entered into between the Commodity Credit Corporation (referred to as "CCC") and the undersigned owners, operators, or tenants (referred to as "the Participant"). The Participant agrees to place the designated acreage into the Conservation Reserve Program ("CRP") or other use set by CCC for the stipulated contract period from the date the Contract is executed by the CCC. The Participant also agrees to implement on such designated acreage the Conservation Plan developed for such acreage and approved by the CCC and the Participant. Additionally, the Participant and CCC agree to comply with the terms and conditions contained in this Contract, including the Appendix to this Contract, entitled Appendix to CRP-1, Conservation Reserve Program Contract (referred to as "Appendix"). By signing below, the Participant acknowledges receipt of a copy of the Appendix/Appendices for the applicable contract period. The terms and conditions of this contract are contained in this Form CRP-1 and in the CRP-1 Appendix and any addendum thereto. BY SIGNING THIS CONTRACT PARTICIPANTS ACKNOWLEDGE RECEIPT OF THE FOLLOWING FORMS: CRP-1; CRP-1 Appendix and any addendum thereto; and, CRP-2, CRP-2C, CRP-2G, or CRP-2C30, as applicable.			
9A. Rental Rate Per Acre \$ 300.00		10. Identification of CRP Land (See Page 2 for additional space)	
9B. Annual Contract Payment \$ 1,248.00		A. Tract No.	B. Field No.
9C. First Year Payment \$		C. Practice No.	D. Acres
(Item 9C is applicable only when the first year payment is prorated.)		E. Total Estimated Cost-Share	F. Total Estimated Cost-Share
		\$ 1,872.00	\$ 4,784.00
11. PARTICIPANTS (If more than three individuals are signing, see Page 3.)			
A(1) PARTICIPANT'S NAME AND ADDRESS (Include Zip Code) <small>ROCK CREEK HARVEST LLC C/O JCE STEVENSON 1486 E COUNTY ROAD 2200 BURNSIDE, IL62330-5002</small>		(2) SHARE 100.00 %	(3) SIGNATURE (By)
B(1) PARTICIPANT'S NAME AND ADDRESS (Include Zip Code) <small>HTFF REIT INC C/O HANCOCK FARMLAND SERVICES 1903 WOODFIELD DR STE B SAVOY, IL61874-8816</small>		(2) SHARE 0.00 %	(3) SIGNATURE (By)
C(1) PARTICIPANT'S NAME AND ADDRESS (Include Zip Code)		(2) SHARE %	(3) SIGNATURE (By)
(4) TITLE/RELATIONSHIP OF THE INDIVIDUAL SIGNING IN THE REPRESENTATIVE CAPACITY		(5) DATE (MM-DD-YYYY)	
12. CCC USE ONLY		A. SIGNATURE OF CCC REPRESENTATIVE	
B. DATE (MM-DD-YYYY)		C. SIGNATURE OF CCC REPRESENTATIVE	

NOTE: The following statement is made in accordance with the Privacy Act of 1974 (5 USC 552a - as amended). The authority for requesting the information identified on this form is the Commodity Credit Corporation Charter Act (15 U.S.C. 714 et seq.), the Food Security Act of 1985 (16 U.S.C. 3801 et seq.), the Agricultural Act of 2014 (16 U.S.C. 3831 et seq.), the Agricultural Improvement Act of 2018 (Pub. L. 115-334) and 7 CFR Part 1410. The information will be used to determine eligibility to participate in and receive benefits under the Conservation Reserve Program. The information collected on this form may be disclosed to other Federal, State, Local government agencies, Tribal agencies, and nongovernmental entities that have been authorized access to the information by statute or regulation and/or as described in applicable Routine Uses identified in the System of Records Notice for USDA/FSA-2, Farm Records File (Automated). Providing the requested information is voluntary. However, failure to furnish the requested information will result in a determination of ineligibility to participate in and receive benefits under the Conservation Reserve Program.

Paperwork Reduction Act (PRA) Statement: The information collection is exempted from PRA as specified in 16 U.S.C. 3846(b)(1). The provisions of appropriate criminal and civil fraud, privacy, and other statutes may be applicable to the information provided. **RETURN THIS COMPLETED FORM TO YOUR COUNTY FSA OFFICE.**

In accordance with Federal civil rights law and U.S. Department of Agriculture (USDA) civil rights regulations and policies, the USDA, its Agencies, offices, and employees, and institutions participating in or administering USDA programs are prohibited from discriminating based on race, color, national origin, religion, sex, gender identity (including gender expression), sexual orientation, disability, age, marital status, family/parental status, income derived from a public assistance program, political beliefs, or reprisal or retaliation for prior civil rights activity, in any program or activity conducted or funded by USDA (not all bases apply to all programs). Remedies and complaint filing deadlines vary by program or incident.

Persons with disabilities who require alternative means of communication for program information (e.g., Braille, large print, audiotape, American Sign Language, etc.) should contact the responsible Agency or USDA's TARGET Center at (202) 720-2600 (voice and TTY) or contact USDA through the Federal Relay Service at (800) 877-8339. Additionally, program information may be made available in languages other than English.

To file a program discrimination complaint, complete the USDA Program Discrimination Complaint Form, AD-3027, found online at http://www.ascr.usda.gov/complaint_filing_cust.html and at any USDA office or write a letter addressed to USDA and provide in the letter all of the information requested in the form. To request a copy of the complaint form, call (866) 632-9992. Submit your completed form or letter to USDA by: (1) mail: U.S. Department of Agriculture Office of the Assistant Secretary for Civil Rights 1400 Independence Avenue, SW Washington, D.C. 20250-9410; (2) fax: (202) 690-7442; or (3) email: program.intake@usda.gov. USDA is an equal opportunity provider, employer, and lender.

Persons with disabilities who require alternative means of communication for program information (e.g., Braille, large print, audiotope, American Sign Language, etc.) should contact the responsible Agency or USDA's TARGET Center at (202) 720-2600 (voice and TTY) or contact USDA through the Federal Relay Service at (800) 877-8339. Additionally, program information may be made available in languages other than English.

To file a program discrimination complaint, complete the USDA Program Discrimination Complaint Form, AD-3027, found online at http://www.ascr.usda.gov/complaint_filing_cust.html and at any USDA office or write a letter addressed to USDA and provide in the letter all of the information requested in the form. To request a copy of the complaint form, call (866) 632-9992. Submit your completed form or letter to USDA by: (1) mail: U.S. Department of Agriculture Office of the Assistant Secretary for Civil Rights 1400 Independence Avenue, SW Washington, D.C. 20250-9410; (2) fax: (202) 690-7442; or (3) email: program.intake@usda.gov. USDA is an equal opportunity provider, employer, and lender.