



United States
Department of
Agriculture

Pike County, Illinois



Legend

- Tract Boundary
- Non-Cropland
- Cropland
- CRP

Wetland Determination Identifiers

- Restricted Use
- Limited Restrictions
- Exempt from Conservation Compliance Provisions

2025 Program Year

Map Created October 23, 2024

Farm **10220**
Tract **19873**

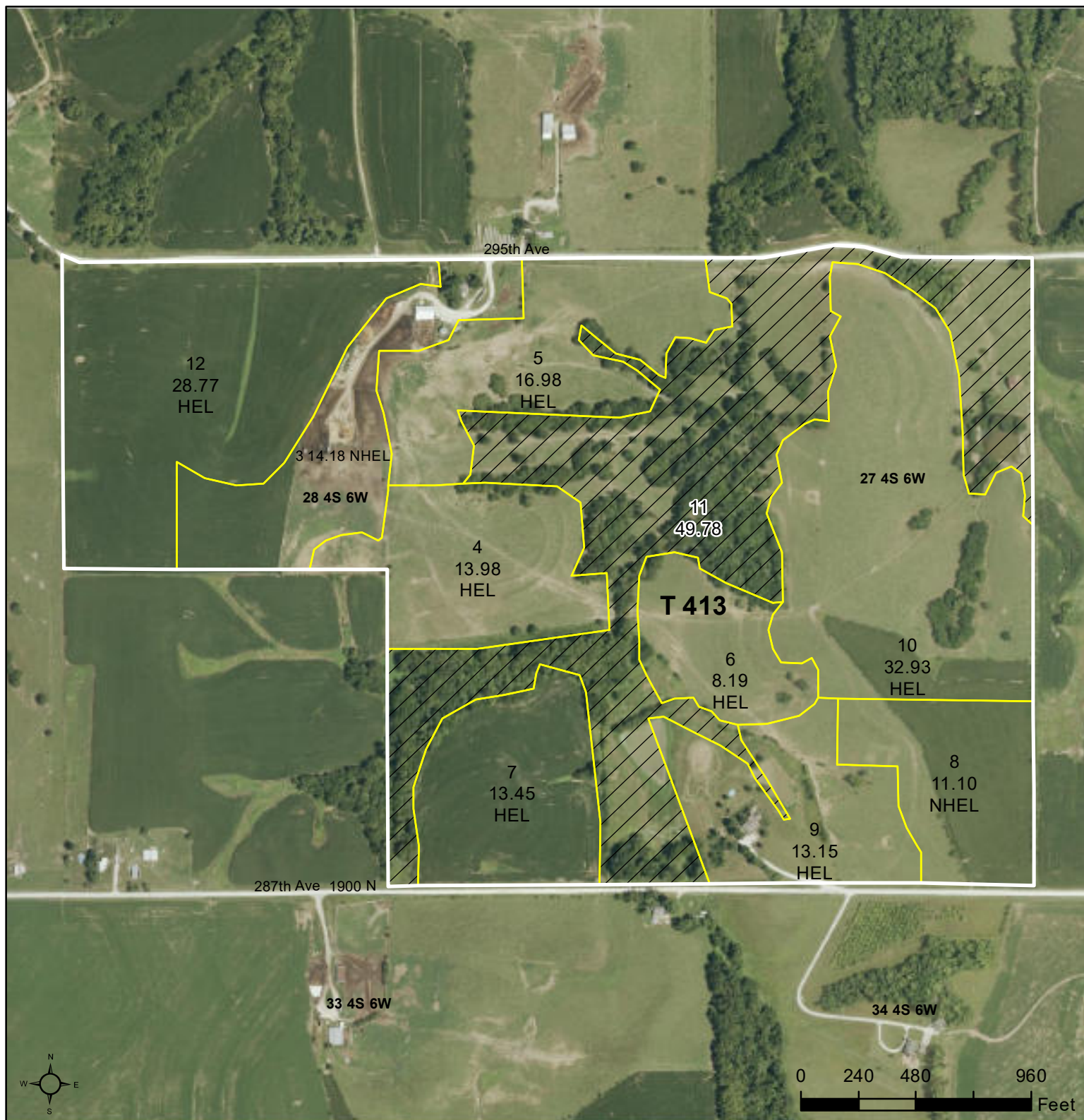
Tract Cropland Total: 117.69 acres

United States Department of Agriculture (USDA) Farm Service Agency (FSA) maps are for FSA Program administration only. This map does not represent a legal survey or reflect actual ownership; rather it depicts the information provided directly from the producer and/or National Agricultural Imagery Program (NAIP) imagery. The producer accepts the data 'as is' and assumes all risks associated with its use. USDA-FSA assumes no responsibility for actual or consequential damage incurred as a result of any user's reliance on this data outside FSA Programs. Wetland identifiers do not represent the size, shape, or specific determination of the area. Refer to your original determination (CPA-026 and attached maps) for exact boundaries and determinations or contact USDA Natural Resources Conservation Service (NRCS).



United States
Department of
Agriculture

Pike County, Illinois



Legend

- Tract Boundary
- Non-Cropland
- Cropland
- CRP

Wetland Determination Identifiers

- Restricted Use
- Limited Restrictions
- Exempt from Conservation Compliance Provisions

2025 Program Year

Map Created October 23, 2024

Farm 10220
Tract 413

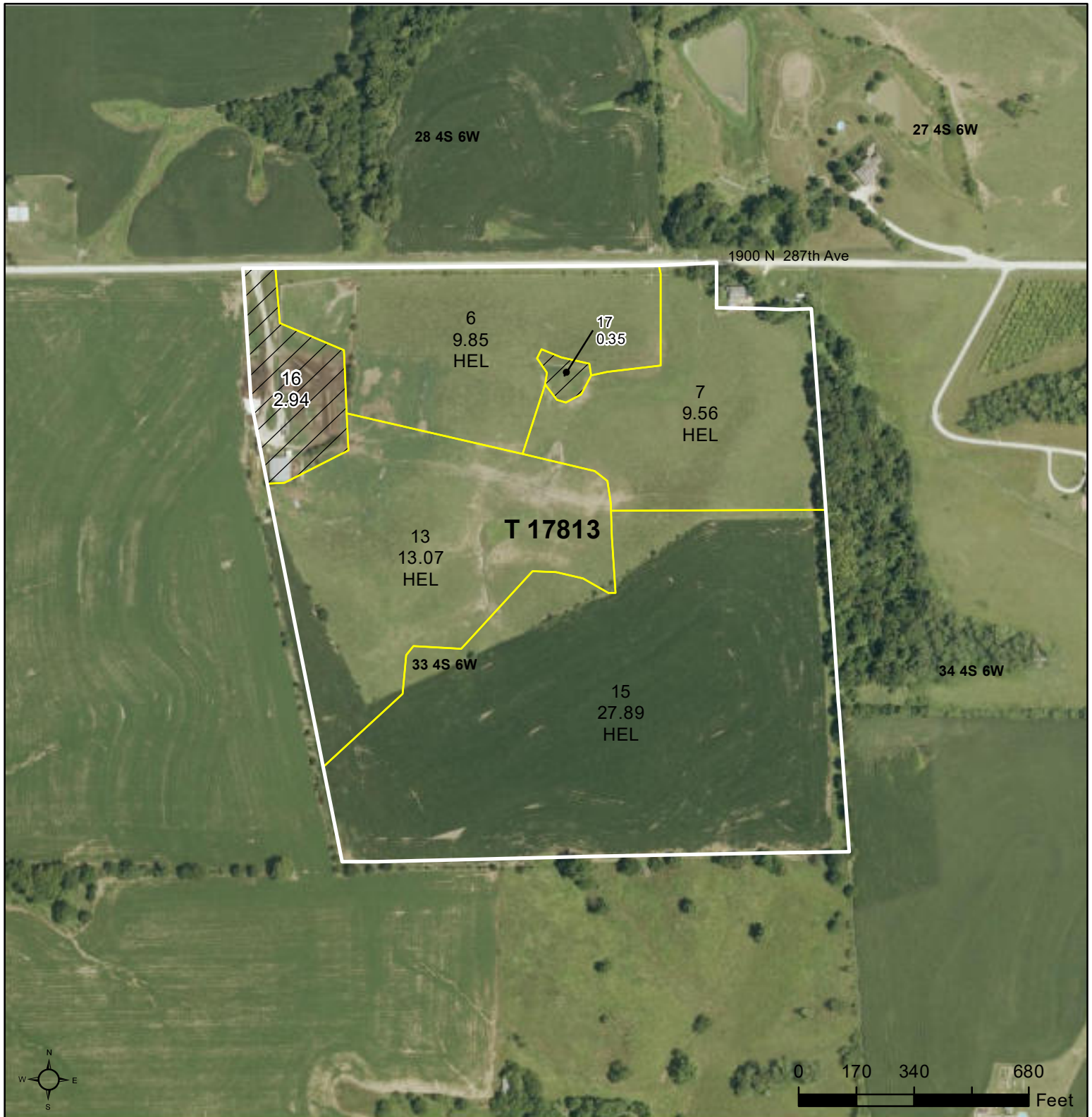
Tract Cropland Total: 152.73 acres

United States Department of Agriculture (USDA) Farm Service Agency (FSA) maps are for FSA Program administration only. This map does not represent a legal survey or reflect actual ownership; rather it depicts the information provided directly from the producer and/or National Agricultural Imagery Program (NAIP) imagery. The producer accepts the data 'as is' and assumes all risks associated with its use. USDA-FSA assumes no responsibility for actual or consequential damage incurred as a result of any user's reliance on this data outside FSA Programs. Wetland identifiers do not represent the size, shape, or specific determination of the area. Refer to your original determination (CPA-026 and attached maps) for exact boundaries and determinations or contact USDA Natural Resources Conservation Service (NRCS).



United States
Department of
Agriculture

Pike County, Illinois



Legend

- Tract Boundary
- Non-Cropland
- Cropland
- CRP

Wetland Determination Identifiers

- Restricted Use
- Limited Restrictions
- Exempt from Conservation Compliance Provisions

2025 Program Year

Map Created October 23, 2024

Farm 10220
Tract 17813

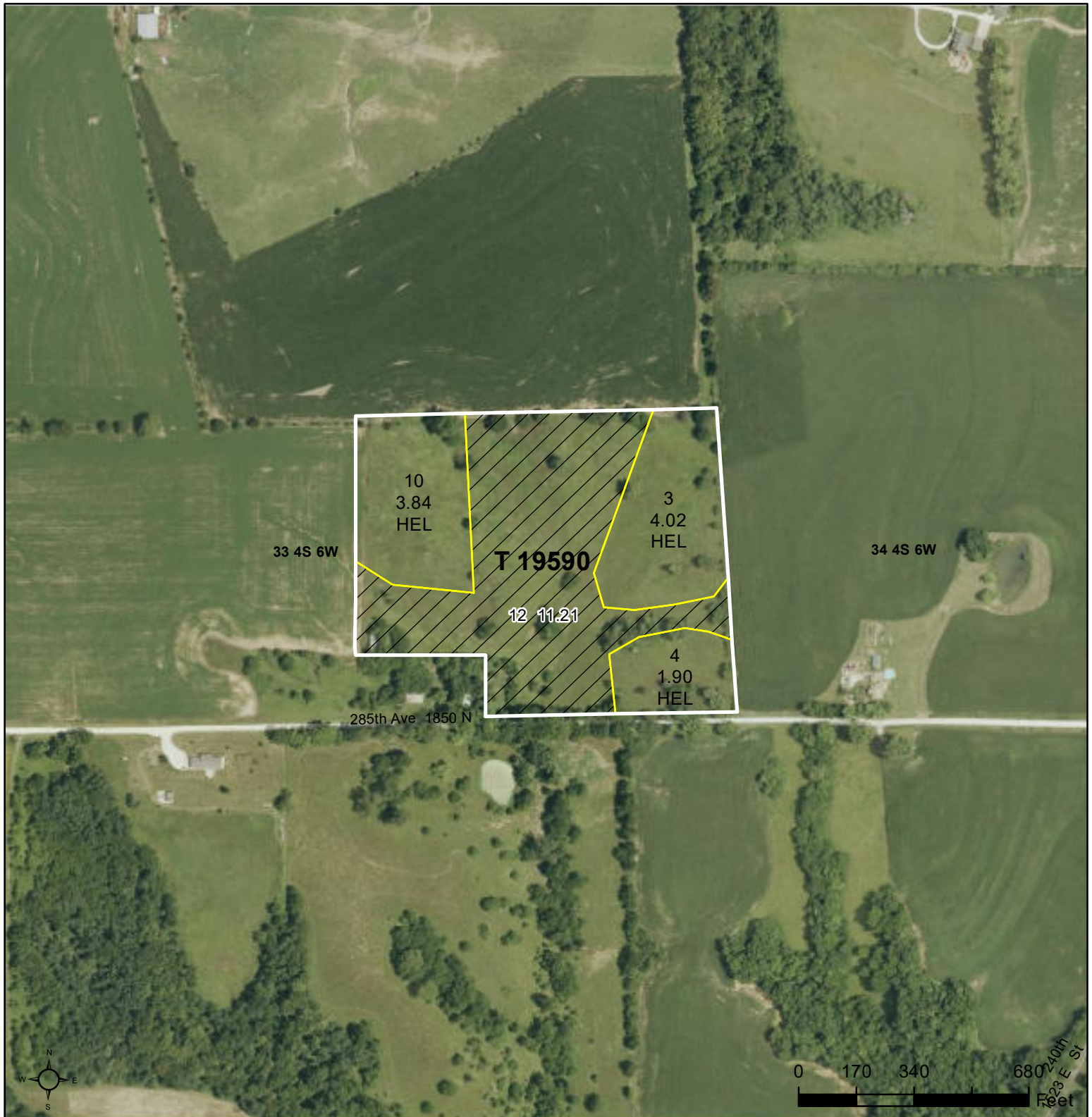
Tract Cropland Total: 60.37 acres

United States Department of Agriculture (USDA) Farm Service Agency (FSA) maps are for FSA Program administration only. This map does not represent a legal survey or reflect actual ownership; rather it depicts the information provided directly from the producer and/or National Agricultural Imagery Program (NAIP) imagery. The producer accepts the data 'as is' and assumes all risks associated with its use. USDA-FSA assumes no responsibility for actual or consequential damage incurred as a result of any user's reliance on this data outside FSA Programs. Wetland identifiers do not represent the size, shape, or specific determination of the area. Refer to your original determination (CPA-026 and attached maps) for exact boundaries and determinations or contact USDA Natural Resources Conservation Service (NRCS).



United States
Department of
Agriculture

Pike County, Illinois



Legend

- Tract Boundary
- Non-Cropland
- Cropland
- CRP

Wetland Determination Identifiers

- Restricted Use
- Limited Restrictions
- Exempt from Conservation Compliance Provisions

2025 Program Year

Map Created October 23, 2024

Farm **10220**

Tract **19590**

Tract Cropland Total: 9.76 acres

United States Department of Agriculture (USDA) Farm Service Agency (FSA) maps are for FSA Program administration only. This map does not represent a legal survey or reflect actual ownership; rather it depicts the information provided directly from the producer and/or National Agricultural Imagery Program (NAIP) imagery. The producer accepts the data 'as is' and assumes all risks associated with its use. USDA-FSA assumes no responsibility for actual or consequential damage incurred as a result of any user's reliance on this data outside FSA Programs. Wetland identifiers do not represent the size, shape, or specific determination of the area. Refer to your original determination (CPA-026 and attached maps) for exact boundaries and determinations or contact USDA Natural Resources Conservation Service (NRCS).



Abbreviated 156 Farm Record

Operator Name :
CRP Contract Number(s) : None
Recon ID : 17-149-2023-5
Transferred From : None
ARCPLC G//F Eligibility : Eligible

Farm Land Data

Farmland	Cropland	DCP Cropland	WBP	EWP	WRP	GRP	Sugarcane	Farm Status	Number Of Tracts
████	████	████	██	██	██	██	██	████	1
State Conservation	Other Conservation	Effective DCP Cropland	Double Cropped			CRP	MPL	DCP Ag.Rel. Activity	SOD
██	██	████	██			██	██	██	██

Crop Election Choice

ARC Individual	ARC County	Price Loss Coverage
████████████████████	████████████████████	████████████████████

DCP Crop Data

Crop Name	Base Acres	CCC-505 CRP Reduction Acres	PLC Yield	HIP
████	██	██	██	
██	██	██	██	1
████	██	██	██	1
TOTAL	████	██		

NOTES

Tract Number : 413

Description : H 7 BARRY SEC 28
FSA Physical Location : ILLINOIS/PIKE
ANSI Physical Location : ILLINOIS/PIKE
BIA Unit Range Number :
HEL Status : HEL field on tract.Conservation system being actively applied
Wetland Status : Tract contains a wetland or farmed wetland
WL Violations : None
Owners : 10 POINT FARMS LLC
Other Producers : None
Recon ID : None

Tract Land Data

Farm Land	Cropland	DCP Cropland	WBP	EWP	WRP	GRP	Sugarcane
202.51	152.73	152.73	0.00	0.00	0.00	0.00	0.0



Abbreviated 156 Farm Record

Tract 413 Continued ...

State Conservation	Other Conservation	Effective DCP Cropland	Double Cropped	CRP	MPL	DCP Ag. Rel Activity	SOD
0.00	0.00	152.73	0.00	0.00	0.00	0.00	0.00

DCP Crop Data

Crop Name	Base Acres	CCC-505 CRP Reduction Acres	PLC Yield
Corn	75.90	0.00	113
Soybeans	25.37	0.00	34
TOTAL	101.27	0.00	

NOTES

--

Tract Number : 17813

Description : BARRY SEC 33
FSA Physical Location : ILLINOIS/PIKE
ANSI Physical Location : ILLINOIS/PIKE
BIA Unit Range Number :
HEL Status : HEL field on tract.Conservation system being actively applied
Wetland Status : Wetland determinations not complete
WL Violations : None
Owners : 10 POINT FARMS LLC
Other Producers : None
Recon ID : None

Tract Land Data

Farm Land	Cropland	DCP Cropland	WBP	EWP	WRP	GRP	Sugarcane
63.66	60.37	60.37	0.00	0.00	0.00	0.00	0.0
State Conservation	Other Conservation	Effective DCP Cropland	Double Cropped	CRP	MPL	DCP Ag. Rel Activity	SOD
0.00	0.00	60.37	0.00	0.00	0.00	0.00	0.00

DCP Crop Data

Crop Name	Base Acres	CCC-505 CRP Reduction Acres	PLC Yield
Corn	30.00	0.00	113
Soybeans	10.03	0.00	34
TOTAL	40.03	0.00	

NOTES

--

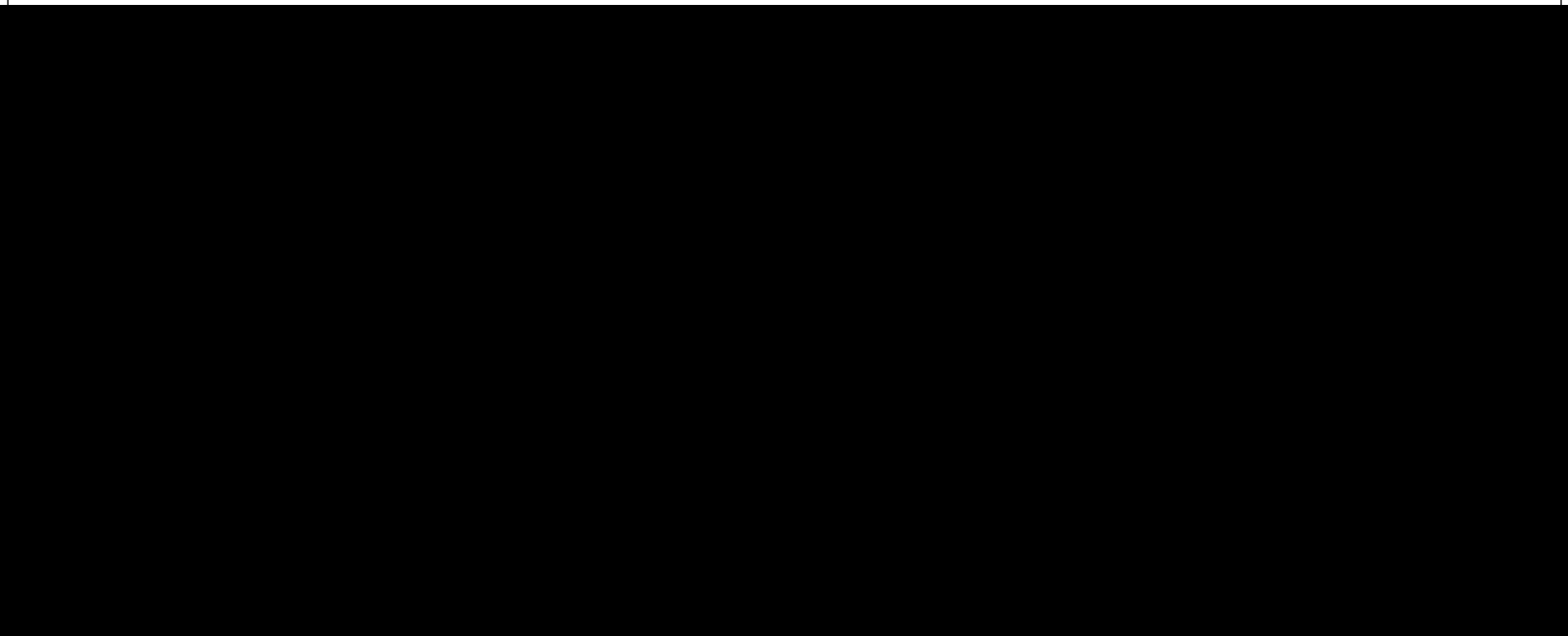
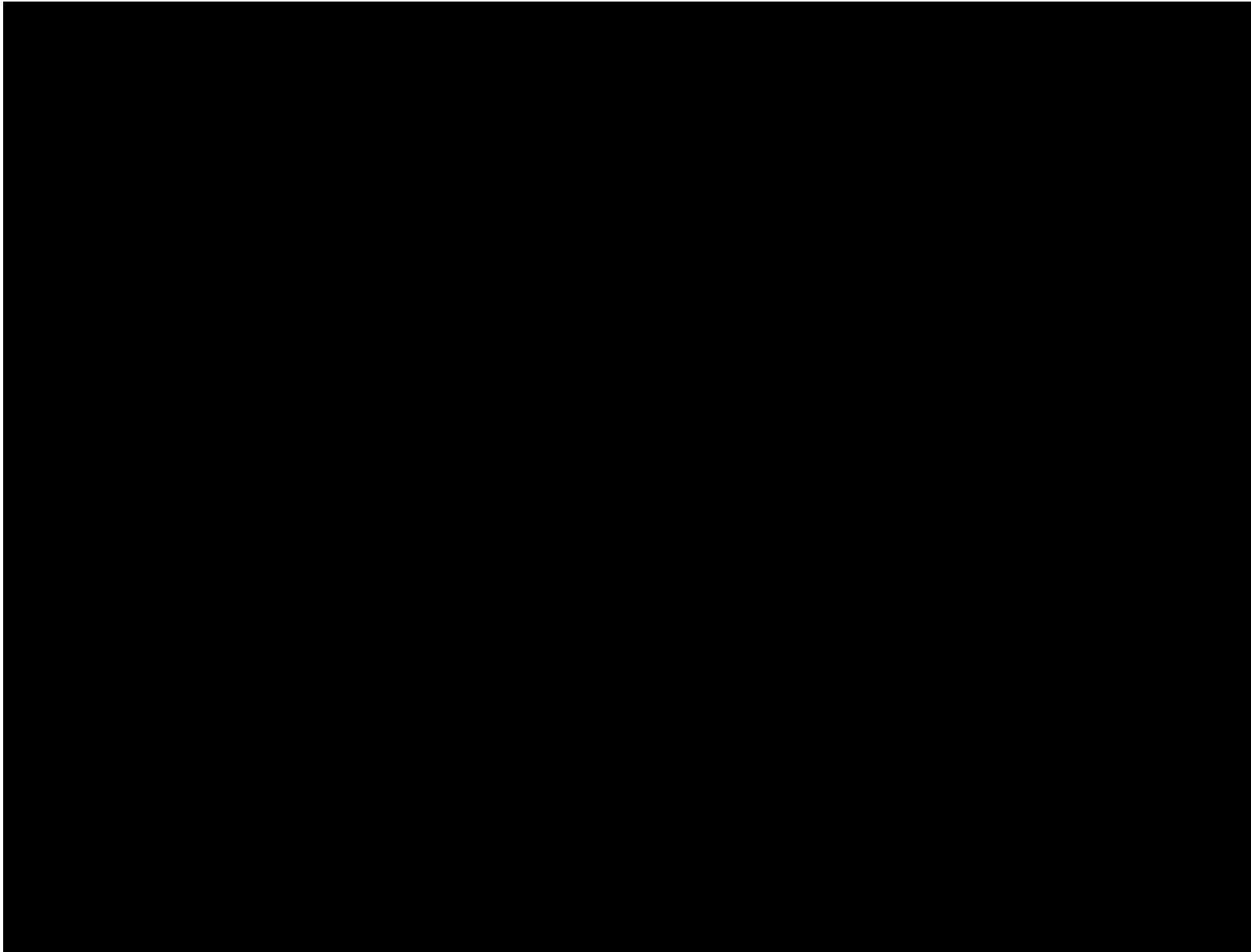


Abbreviated 156 Farm Record

FARM : 10220

Prepared : 3/17/25 8:07 AM CST

Crop Year : 2025



Abbreviated 156 Farm Record

Tract Number : 19590

Description : Barry Sec 33
FSA Physical Location : ILLINOIS/PIKE
ANSI Physical Location : ILLINOIS/PIKE
BIA Unit Range Number :
HEL Status : HEL field on tract.Conservation system being actively applied
Wetland Status : Wetland determinations not complete
WL Violations : None
Owners : 10 POINT FARMS LLC
Other Producers : None
Recon ID : None

Tract Land Data							
Farm Land	Cropland	DCP Cropland	WBP	EWP	WRP	GRP	Sugarcane
20.97	9.76	9.76	0.00	0.00	0.00	0.00	0.0
State Conservation	Other Conservation	Effective DCP Cropland	Double Cropped	CRP	MPL	DCP Ag. Rel Activity	SOD
0.00	0.00	9.76	0.00	0.00	0.00	0.00	0.00

DCP Crop Data			
Crop Name	Base Acres	CCC-505 CRP Reduction Acres	PLC Yield
Corn	4.86	0.00	113
Soybeans	1.62	0.00	34
TOTAL	6.48	0.00	

NOTES

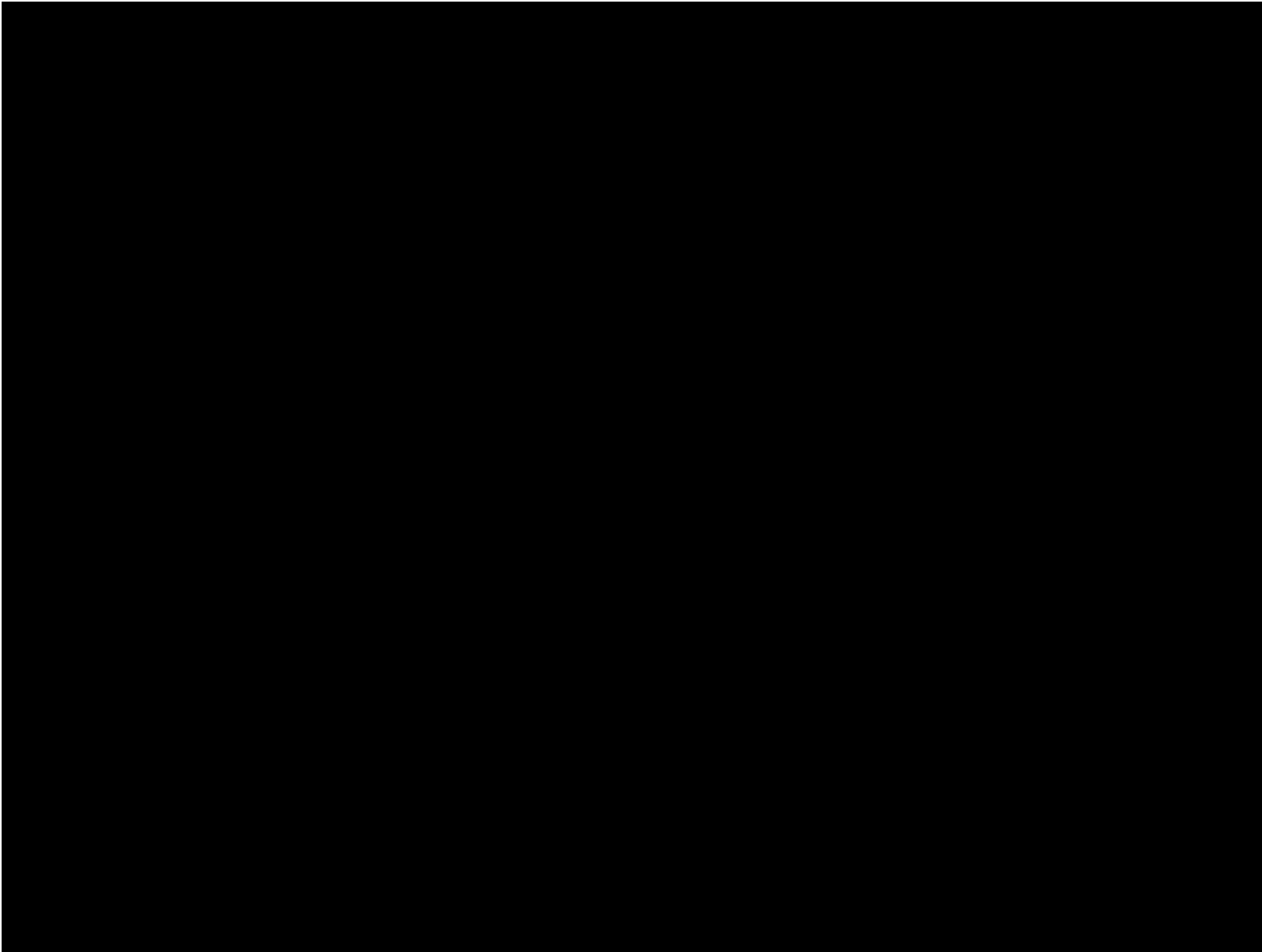
ILLINOIS
PIKE
Form: FSA-156EZ



United States Department of Agriculture
Farm Service Agency

Abbreviated 156 Farm Record

FARM : 10220
Prepared : 3/17/25 8:07 AM CST
Crop Year : 2025



Tract Number : 19873

Description : Kinderhook 22 & 23

FSA Physical Location : ILLINOIS/PIKE

ANSI Physical Location : ILLINOIS/PIKE

BIA Unit Range Number :

HEL Status : NHEL: No agricultural commodity planted on undetermined fields

Wetland Status : Tract contains a wetland or farmed wetland

WL Violations : None

Owners : 10 POINT FARMS LLC

Other Producers : None

Recon ID : 17-149-2017-165

Tract Land Data

Farm Land	Cropland	DCP Cropland	WBP	EWP	WRP	GRP	Sugarcane
120.29	117.69	117.69	0.00	0.00	0.00	0.00	0.0



Abbreviated 156 Farm Record

Tract 19873 Continued ...

State Conservation	Other Conservation	Effective DCP Cropland	Double Cropped	CRP	MPL	DCP Ag. Rel Activity	SOD
0.00	0.00	117.69	0.00	0.00	0.00	0.00	0.00

DCP Crop Data

Crop Name	Base Acres	CCC-505 CRP Reduction Acres	PLC Yield
Corn	56.78	0.00	164
Soybeans	56.96	0.00	42
TOTAL	113.74	0.00	

NOTES

In accordance with Federal civil rights law and U.S. Department of Agriculture (USDA) civil rights regulations and policies, the USDA, its Agencies, offices, and employees, and institutions participating in or administering USDA programs are prohibited from discriminating based on race, color, national origin, religion, sex, gender identity (including gender expression), sexual orientation, disability, age, marital status, family/parental status, income derived from a public assistance program, political beliefs, or reprisal or retaliation for prior civil rights activity, in any program or activity conducted or funded by USDA (not all bases apply to all programs). Remedies and complaint filing deadlines vary by program or incident.

Persons with disabilities who require alternative means of communication for program information (e.g., Braille, large print, audiotape, American Sign Language, etc.) should contact the responsible Agency or USDA's TARGET Center at (202) 720-2600 (voice and TTY) or contact USDA through the Federal Relay Service at (800) 877-8339. Additionally, program information may be made available in languages other than English.

To file a program discrimination complaint, complete the USDA Program Discrimination Complaint Form, AD-3027, found online at http://www.ascr.usda.gov/complaint_filing_cust.html and at any USDA office or write a letter addressed to USDA and provide in the letter all of the information requested in the form. To request a copy of the complaint form, call (866) 632-9992. Submit your completed form or letter to USDA by: (1) mail: U.S. Department of Agriculture Office of the Assistant Secretary for Civil Rights 1400 Independence Avenue, SW Washington, D.C. 20250-9410; (2) fax: (202) 690-7442; or (3) e-mail: program.intake@usda.gov. USDA is an equal opportunity provider, employer, and lender.