

PLAT OF SURVEY

A TRACT BEING PART OF SECTIONS 13, 14, 23 & 24, TOWNSHIP 2 NORTH, RANGE 3 WEST OF THE THIRD/FOURTH PRINCIPAL MERIDIAN, SCHUYLER COUNTY, ILLINOIS

PRELIMINARY

SUGGESTED PROPERTY DESCRIPTION
TRACT 1 - 65.09 ACRES

A TRACT OF LAND LYING IN PART OF THE SOUTHEAST QUARTER OF SECTION 14 AND THE SOUTHWEST QUARTER OF SECTION 13, TOWNSHIP 2 NORTH, RANGE 3 WEST OF THE FOURTH PRINCIPAL MERIDIAN, SCHUYLER COUNTY, ILLINOIS BEING MORE PARTICULARLY DESCRIBED AS FOLLOWS:

BEGINNING AT A FOUND IRON PIN AT THE SOUTHEAST CORNER OF SAID SOUTHEAST QUARTER; THENCE NORTH 87 DEGREES 53 MINUTES 22 SECONDS WEST A DISTANCE OF 1342.21 FEET TO THE SOUTHWEST CORNER OF SAID SOUTHEAST QUARTER; THENCE NORTH 01 DEGREES 05 MINUTES 54 SECONDS EAST A DISTANCE OF 1340.10 FEET TO THE NORTHWEST CORNER OF THE SOUTHEAST QUARTER OF SAID SOUTHEAST QUARTER; THENCE SOUTH 87 DEGREES 58 MINUTES 24 SECONDS EAST A DISTANCE OF 1339.19 FEET TO THE NORTHWEST CORNER OF THE SOUTHWEST QUARTER OF SAID SOUTHWEST QUARTER; THENCE SOUTH 84 DEGREES 42 MINUTES 37 SECONDS EAST ALONG THE NORTH LINE OF SAID SOUTHWEST QUARTER A DISTANCE OF 615.42 FEET TO A POINT ON THE CENTERLINE OF LA MOINE RIVER; THENCE ALONG SAID CENTERLINE THE FOLLOWING FOUR COURSES, SOUTH 14 DEGREES 53 MINUTES 10 SECONDS EAST A DISTANCE OF 334.57 FEET; THENCE SOUTH 13 DEGREES 13 MINUTES 50 SECONDS EAST A DISTANCE OF 468.38 FEET; THENCE SOUTH 04 DEGREES 58 MINUTES 54 SECONDS EAST A DISTANCE OF 497.86 FEET; THENCE SOUTH 02 DEGREES 21 MINUTES 12 SECONDS EAST A DISTANCE OF 81.40 FEET TO A POINT ON THE SOUTH LINE OF SAID SOUTHWEST QUARTER; THENCE NORTH 85 DEGREES 20 MINUTES 07 SECONDS WEST ALONG THE SOUTH LINE OF SAID SOUTHWEST QUARTER A DISTANCE OF 878.17 FEET TO THE POINT OF BEGINNING, CONTAINING 65.09 ACRES MORE OR LESS BEING SUBJECTED TO ALL THAT PORTION BEING USED FOR PUBLIC ROAD PURPOSES.

SUGGESTED PROPERTY DESCRIPTION
TRACT 2 - 96.82 ACRES

A TRACT OF LAND LYING IN PART OF THE NORTHEAST QUARTER OF SECTION 23 AND THE NORTHWEST QUARTER OF SECTION 24, TOWNSHIP 2 NORTH, RANGE 3 WEST OF THE FOURTH PRINCIPAL MERIDIAN, SCHUYLER COUNTY, ILLINOIS BEING MORE PARTICULARLY DESCRIBED AS FOLLOWS:

BEGINNING AT A FOUND IRON PIN AT THE NORTHWEST CORNER OF SAID NORTHWEST QUARTER; THENCE SOUTH 85 DEGREES 20 MINUTES 07 SECONDS EAST ALONG THE CENTERLINE OF SAID NORTHWEST QUARTER A DISTANCE OF 878.17 FEET TO A POINT ON THE CENTERLINE OF LA MOINE RIVER; THENCE ALONG SAID CENTERLINE THE FOLLOWING SIX COURSES, SOUTH 02 DEGREES 21 MINUTES 12 SECONDS EAST A DISTANCE OF 266.50 FEET; THENCE SOUTH 10 DEGREES 07 MINUTES 26 SECONDS WEST A DISTANCE OF 253.71 FEET; THENCE SOUTH 24 DEGREES 56 MINUTES 41 SECONDS WEST A DISTANCE OF 341.90 FEET; THENCE SOUTH 38 DEGREES 57 MINUTES 32 SECONDS WEST A DISTANCE OF 227.04 FEET; THENCE SOUTH 36 DEGREES 31 MINUTES 56 SECONDS WEST A DISTANCE OF 211.26 FEET; THENCE SOUTH 28 DEGREES 02 MINUTES 09 SECONDS WEST A DISTANCE OF 153.39 FEET TO A POINT ON THE SOUTH LINE OF THE NORTHWEST QUARTER OF SAID NORTHWEST QUARTER; THENCE NORTH 85 DEGREES 45 MINUTES 45 SECONDS WEST A DISTANCE OF 420.09 FEET TO A #5 REBAR SET AT THE SOUTHWEST CORNER OF THE NORTHWEST QUARTER OF SAID NORTHWEST QUARTER; THENCE SOUTH 02 DEGREES 38 MINUTES 19 SECONDS WEST A DISTANCE OF 1349.84 FEET TO A #5 REBAR SET AT THE SOUTHEAST CORNER OF SAID NORTHEAST QUARTER; THENCE NORTH 86 DEGREES 58 MINUTES 26 SECONDS WEST ALONG THE SOUTH LINE OF SAID NORTHEAST QUARTER A DISTANCE OF 349.73 FEET TO THE CENTERLINE OF SLOUGH ROAD; THENCE ALONG SAID CENTERLINE THE FOLLOWING FOURTEEN COURSES, ALONG A CURVE TO THE LEFT HAVING AN ARC LENGTH OF 28.56 FEET, A RADIUS OF 80.00 FEET, A CHORD BEARING OF NORTH 70 DEGREES 42 MINUTES 40 SECONDS WEST, AND A CHORD LENGTH OF 28.43 FEET; THENCE NORTH 80 DEGREES 56 MINUTES 45 SECONDS WEST A DISTANCE OF 84.61 FEET; THENCE NORTH 89 DEGREES 59 MINUTES 56 SECONDS WEST A DISTANCE OF 115.26 FEET; THENCE ALONG A CURVE TO THE RIGHT HAVING AN ARC LENGTH OF 136.00 FEET, A RADIUS OF 90.00 FEET, A CHORD BEARING OF NORTH 46 DEGREES 35 MINUTES 37 SECONDS WEST, AND A CHORD LENGTH OF 123.42 FEET; THENCE NORTH 03 DEGREES 18 MINUTES 18 SECONDS WEST A DISTANCE OF 217.11 FEET; THENCE NORTH 09 DEGREES 07 MINUTES 21 SECONDS WEST A DISTANCE OF 114.29 FEET; THENCE ALONG A CURVE TO THE LEFT HAVING AN ARC LENGTH OF 178.57 FEET, A RADIUS OF 110.00 FEET, A CHORD BEARING OF NORTH 54 DEGREES 37 MINUTES 45 SECONDS WEST, AND A CHORD LENGTH OF 159.60 FEET; THENCE SOUTH 78 DEGREES 51 MINUTES 51 SECONDS WEST A DISTANCE OF 83.36 FEET; THENCE ALONG A CURVE TO THE RIGHT HAVING AN ARC LENGTH OF 71.89 FEET, A RADIUS OF 110.00 FEET, A CHORD BEARING OF NORTH 82 DEGREES 24 MINUTES 43 SECONDS WEST, AND A CHORD LENGTH OF 70.62 FEET; THENCE NORTH 02 DEGREES 41 MINUTES 37 SECONDS WEST, AND A CHORD LENGTH OF 159.59 FEET; THENCE NORTH 07 DEGREES 41 MINUTES 56 SECONDS WEST A DISTANCE OF 271.65 FEET; THENCE NORTH 02 DEGREES 11 MINUTES 32 SECONDS WEST A DISTANCE OF 153.90 FEET; THENCE NORTH 01 DEGREES 50 MINUTES 41 SECONDS EAST A DISTANCE OF 1574.41 FEET TO A POINT ON THE NORTH LINE OF SAID NORTHEAST QUARTER; THENCE SOUTH 87 DEGREES 53 MINUTES 22 SECONDS EAST ALONG SAID NORTH LINE A DISTANCE OF 1342.21 FEET TO THE POINT OF BEGINNING, CONTAINING 96.82 ACRES MORE OR LESS BEING SUBJECTED TO ALL THAT PORTION BEING USED FOR PUBLIC ROAD PURPOSES.

SUGGESTED PROPERTY DESCRIPTION
TRACT 3 - 121.51 ACRES

A TRACT OF LAND LYING IN PART OF THE SOUTHEAST QUARTER OF SECTION 23, TOWNSHIP 2 NORTH, RANGE 3 WEST OF THE FOURTH PRINCIPAL MERIDIAN, SCHUYLER COUNTY, ILLINOIS BEING MORE PARTICULARLY DESCRIBED AS FOLLOWS:

BEGINNING AT A FOUND IRON PIN AT THE NORTHWEST CORNER OF SAID SOUTHEAST QUARTER; THENCE SOUTH 86 DEGREES 58 MINUTES 26 SECONDS EAST A DISTANCE OF 2694.04 FEET TO A #5 REBAR SET AT THE NORTHEAST CORNER OF SAID SOUTHEAST QUARTER; THENCE SOUTH 01 DEGREES 12 MINUTES 28 SECONDS WEST ALONG THE EAST LINE OF SAID SOUTHEAST QUARTER A DISTANCE OF 1537.37 FEET TO A FOUND IRON PIN; THENCE LEAVING SAID EAST LINE NORTH 89 DEGREES 50 MINUTES 54 SECONDS WEST A DISTANCE OF 332.50 FEET TO A FOUND IRON PIN; THENCE SOUTH 12 DEGREES 17 MINUTES 55 SECONDS WEST A DISTANCE OF 778.02 FEET TO A FOUND IRON PIN; THENCE SOUTH 89 DEGREES 03 MINUTES 02 SECONDS WEST A DISTANCE OF 491.50 FEET TO A FOUND IRON PIN; THENCE NORTH 12 DEGREES 45 MINUTES 08 SECONDS EAST A DISTANCE OF 101.70 FEET TO A FOUND IRON PIN; THENCE NORTH 51 DEGREES 10 MINUTES 35 SECONDS WEST A DISTANCE OF 224.89 FEET TO A FOUND IRON PIN; THENCE NORTH 27 DEGREES 07 MINUTES 27 SECONDS EAST A DISTANCE OF 228.93 FEET TO A #5 REBAR SET; THENCE NORTH 87 DEGREES 08 MINUTES 14 SECONDS WEST A DISTANCE OF 1677.88 FEET TO A FOUND IRON PIN AT THE WEST LINE OF SAID SOUTHEAST QUARTER; THENCE NORTH 01 DEGREES 39 MINUTES 57 SECONDS EAST ALONG SAID WEST LINE A DISTANCE OF 1918.33 FEET TO THE POINT OF BEGINNING, CONTAINING 121.51 ACRES MORE OR LESS BEING SUBJECTED TO ALL THAT PORTION BEING USED FOR PUBLIC ROAD PURPOSES.

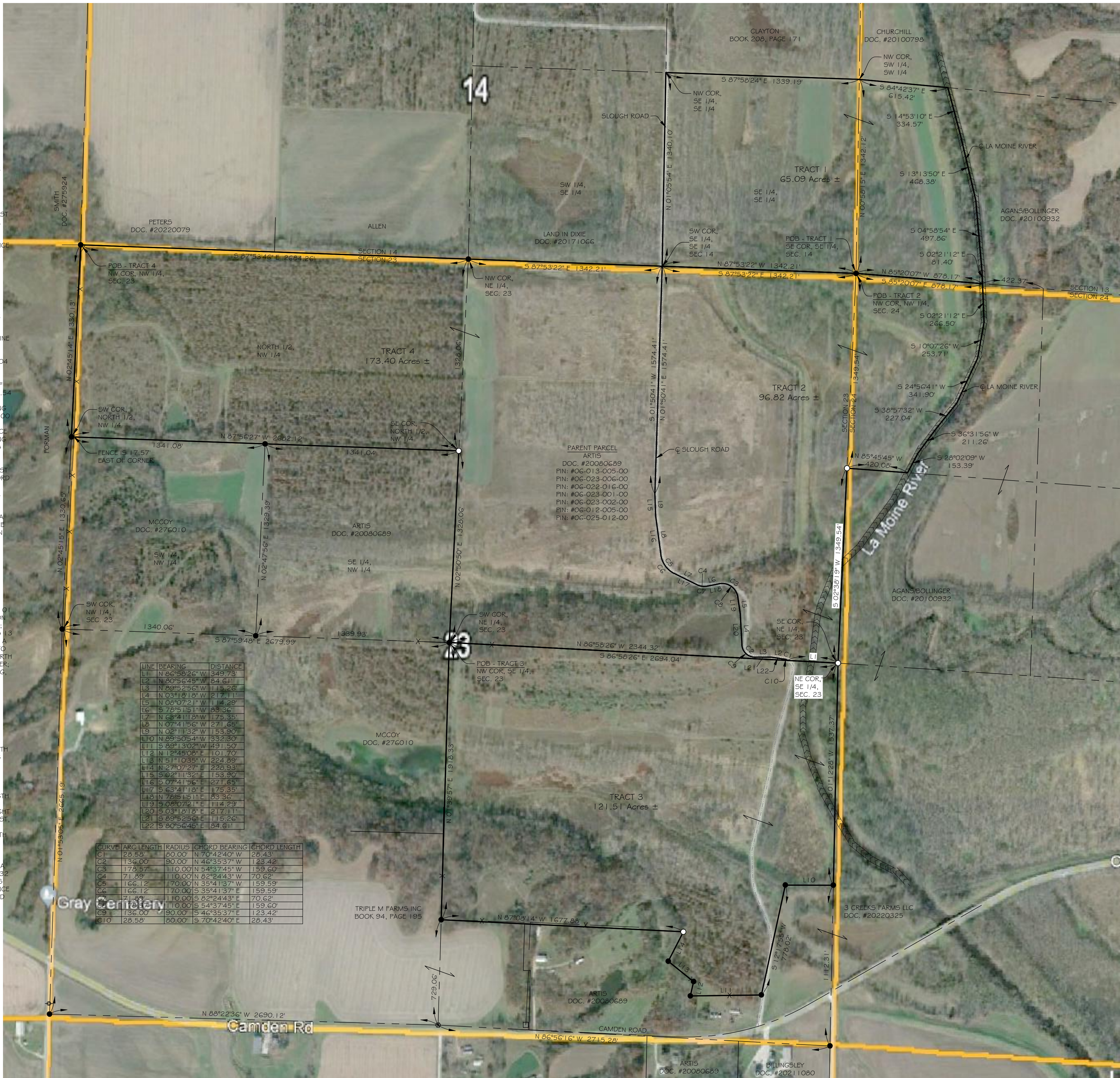
SUGGESTED PROPERTY DESCRIPTION
TRACT 4 - 173.40 ACRES

A TRACT OF LAND LYING IN PART OF THE NORTHWEST AND NORTHEAST QUARTERS OF SECTION 23, TOWNSHIP 2 NORTH, RANGE 3 WEST OF THE FOURTH PRINCIPAL MERIDIAN, SCHUYLER COUNTY, ILLINOIS BEING MORE PARTICULARLY DESCRIBED AS FOLLOWS:

BEGINNING AT A FOUND IRON PIN AT THE NORTHWEST CORNER OF SAID NORTHWEST QUARTER; THENCE SOUTH 87 DEGREES 53 MINUTES 46 SECONDS EAST A DISTANCE OF 2684.26 FEET TO A FOUND IRON PIN AT THE NORTHWEST CORNER OF SAID NORTHEAST QUARTER; THENCE SOUTH 07 DEGREES 53 MINUTES 22 SECONDS EAST A DISTANCE OF 1342.21 FEET TO A POINT ON THE CENTERLINE OF SLOUGH ROAD; THENCE ALONG SAID CENTERLINE THE FOLLOWING FOURTEEN COURSES, SOUTH 01 DEGREES 50 MINUTES 41 SECONDS WEST A DISTANCE OF 1574.41 FEET; THENCE SOUTH 02 DEGREES 11 MINUTES 32 SECONDS EAST A DISTANCE OF 153.90 FEET; THENCE SOUTH 07 DEGREES 41 MINUTES 56 SECONDS EAST A DISTANCE OF 271.65 FEET; THENCE ALONG A CURVE TO THE LEFT HAVING AN ARC LENGTH OF 166.12 FEET, A RADIUS OF 170.00 FEET, A CHORD BEARING OF SOUTH 35 DEGREES 41 MINUTES 37 SECONDS WEST, AND A CHORD LENGTH OF 159.59 FEET; THENCE SOUTH 63 DEGREES 41 MINUTES 18 SECONDS EAST A DISTANCE OF 178.57 FEET; THENCE ALONG A CURVE TO THE LEFT HAVING AN ARC LENGTH OF 71.89 FEET, A RADIUS OF 110.00 FEET, A CHORD BEARING OF SOUTH 82 DEGREES 24 MINUTES 43 SECONDS EAST, AND A CHORD LENGTH OF 70.62 FEET; THENCE NORTH 78 DEGREES 51 MINUTES 51 SECONDS EAST A DISTANCE OF 83.36 FEET; THENCE ALONG A CURVE TO THE RIGHT HAVING AN ARC LENGTH OF 178.57 FEET, A RADIUS OF 110.00 FEET, A CHORD BEARING OF SOUTH 54 DEGREES 37 MINUTES 45 SECONDS EAST, AND A CHORD LENGTH OF 159.60 FEET; THENCE SOUTH 08 DEGREES 07 MINUTES 21 SECONDS EAST A DISTANCE OF 114.29 FEET; THENCE SOUTH 03 DEGREES 18 MINUTES 18 SECONDS EAST A DISTANCE OF 217.11 FEET; THENCE ALONG A CURVE TO THE LEFT HAVING AN ARC LENGTH OF 136.00 FEET, A RADIUS OF 90.00 FEET, A CHORD BEARING OF SOUTH 46 DEGREES 35 MINUTES 37 SECONDS EAST, AND A CHORD LENGTH OF 123.42 FEET; THENCE SOUTH 89 DEGREES 52 MINUTES 56 SECONDS EAST A DISTANCE OF 115.26 FEET; THENCE SOUTH 80 DEGREES 56 MINUTES 45 SECONDS EAST A DISTANCE OF 84.61 FEET; THENCE ALONG A CURVE TO THE RIGHT HAVING AN ARC LENGTH OF 28.56 FEET, A RADIUS OF 80.00 FEET, A CHORD BEARING OF SOUTH 70 DEGREES 42 MINUTES 40 SECONDS EAST, AND A CHORD LENGTH OF 28.43 FEET TO A POINT ON THE SOUTH LINE OF SAID NORTHEAST QUARTER; THENCE NORTH 86 DEGREES 58 MINUTES 26 SECONDS WEST A DISTANCE OF 2344.32 FEET TO A FOUND IRON PIN AT THE SOUTHWEST CORNER OF SAID NORTHEAST QUARTER; THENCE NORTH 02 DEGREES 50 MINUTES 50 SECONDS EAST A DISTANCE OF 1328.06 FEET TO A #5 REBAR SET AT THE SOUTHEAST CORNER OF THE NORTH HALF OF SAID NORTHWEST QUARTER; THENCE NORTH 87 DEGREES 56 MINUTES 27 SECONDS WEST A DISTANCE OF 2682.12 FEET TO A FOUND IRON PIN AT THE SOUTHWEST CORNER OF SAID NORTH HALF; THENCE NORTH 02 DEGREES 45 MINUTES 14 SECONDS EAST A DISTANCE OF 1330.13 FEET TO THE POINT OF BEGINNING, CONTAINING 173.40 ACRES MORE OR LESS BEING SUBJECTED TO ALL THAT PORTION BEING USED FOR PUBLIC ROAD PURPOSES.

THIS IS A RESULT OF MY SURVEY AS PREPARED BY ME OR UNDER MY DIRECT SUPERVISION DURING JANUARY 2024, WHICH I CERTIFY TO BE TRUE AND CORRECT TO THE BEST OF MY KNOWLEDGE AND BELIEF, AND THAT I AM A PROFESSIONAL SURVEYOR CONFORMING TO THE CURRENT MINIMUM STANDARDS FOR A BOUNDARY SURVEY.

NORMAN D. BLUMBERG
ILLINOIS PROFESSIONAL LAND SURVEYOR #35-3159
LICENSE EXPIRES NOVEMBER 30, 2024
ILLINOIS PROFESSIONAL DESIGN FIRM #184-006044



RECORDER'S USE ONLY

1" = 400'
GRAPHIC SCALE
0 200 400 800

Legend

- #5 REBAR SET
- IRON PIN/PIPE FOUND
- POST
- COTTON GIN SPINDLE
- POB POINT OF BEGINNING
- (M) DISTANCE MEASURED THIS SURVEY
- (PR) DISTANCE PER PLAT RECORD
- (DR) DISTANCE PER DEED RECORD
- X- FENCE

PLAT OF SURVEY
SEC. 13, 14, 23 & 24, T2N, R3W
4TH PM, SCHUYLER COUNTY,
ILLINOIS

| NO. | DATE | REVISION DESCRIPTION | BY |
|-----|------|----------------------|----|
| | | | |
| | | | |
| | | | |

FOUR POINTS LAND SURVEYING & ENGINEERING, INC.
17 NORTHPORT PLAZA
HAWTHORN, ILLINOIS 62453
ILLINOIS PROFESSIONAL DESIGN FIRM #184-006044

| BOUNDARY SURVEY | PREPARED FOR | SHEET NO. |
|-----------------|----------------------|-----------|
| | BEATRICE ARTIS TRUST | 1 OF 1 |

SURVEYOR'S NOTES:

- THE PROFESSIONAL LAND SURVEYOR HAS MADE NO INVESTIGATION OR INDEPENDENT SEARCH FOR EASEMENTS OF RECORD, ENCUMBRANCES, RESTRICTIVE COVENANTS, OWNERSHIP TITLE EVIDENCE OR ANY OTHER FACTS THAT AN ACCURATE AND CURRENT TITLE SEARCH MAY DISCLOSE. THERE MAY EXIST OTHER DOCUMENTS OF RECORD OR NOT OF RECORD THAT MAY AFFECT THIS SURVEYED PARCEL.
- THE PROPERTY OWNER NAMES AND RECORDED DEED INFORMATION WERE OBTAINED FROM THE COUNTY RECORDER AND/OR COUNTY ASSESSOR OFFICE AND ARE CONSIDERED TO BE CURRENT. THE PROFESSIONAL LAND SURVEYOR MAKES NO GUARANTEES TO THE CORRECTNESS OF THE DEEDS OR THE CURRENT STATUS OF PROPERTY OWNERSHIP.
- BASIS OF BEARINGS IS BASED UPON THE ILLINOIS STATE PLANE COORDINATE SYSTEM OF 1983, XXX ZONE.
- BY GRAPHIC PLOTTING ONLY, THIS PROPERTY IS LOCATED IN ZONE "X" OR AREAS DETERMINED TO BE OUTSIDE THE 0.2% ANNUAL CHANCE FLOODPLAIN AS IDENTIFIED FOR THE COUNTY OF SCHUYLER, ILLINOIS BY THE FEDERAL EMERGENCY MANAGEMENT AGENCY ON FLOOD INSURANCE RATE MAP NUMBER 17169C0200D, DATED AUGUST 5, 2010 AND IS NOT IN A SPECIAL FLOOD HAZARD AREA. NO FIELD SURVEYING WAS PERFORMED TO DETERMINE THIS ZONE.
- THE FIELD WORK WAS COMPLETED ON MONTH DAY, YEAR

PLAT OF SURVEY

A TRACT BEING PART OF SECTIONS 13, 14, 23 & 24, TOWNSHIP 2 NORTH, RANGE 3 WEST OF THE THIRD/FOURTH PRINCIPAL MERIDIAN, SCHUYLER COUNTY, ILLINOIS

PRELIMINARY

SUGGESTED PROPERTY DESCRIPTION TRACT 1 - 65.09 ACRES

A TRACT OF LAND LYING IN PART OF THE SOUTHEAST QUARTER OF SECTION 14 AND THE SOUTHWEST QUARTER OF SECTION 13, TOWNSHIP 2 NORTH, RANGE 3 WEST OF THE FOURTH PRINCIPAL MERIDIAN, SCHUYLER COUNTY, ILLINOIS BEING MORE PARTICULARLY DESCRIBED AS FOLLOWS:

BEGINNING AT A FOUND IRON PIN AT THE SOUTHEAST CORNER OF SAID SOUTHEAST QUARTER; THENCE NORTH 87 DEGREES 53 MINUTES 22 SECONDS WEST A DISTANCE OF 1342.21 FEET TO THE SOUTHWEST CORNER OF THE SOUTHEAST QUARTER OF SAID SOUTHEAST QUARTER; THENCE NORTH 01 DEGREES 05 MINUTES 54 SECONDS EAST A DISTANCE OF 1340.10 FEET TO THE NORTHWEST CORNER OF THE SOUTHEAST QUARTER OF SAID SOUTHEAST QUARTER; THENCE SOUTH 87 DEGREES 58 MINUTES 24 SECONDS EAST A DISTANCE OF 1339.19 FEET TO THE NORTHWEST CORNER OF THE SOUTHWEST QUARTER OF SAID SOUTHWEST QUARTER; THENCE SOUTH 84 DEGREES 42 MINUTES 37 SECONDS EAST ALONG THE NORTH LINE OF THE SOUTHWEST QUARTER OF SAID SOUTHWEST QUARTER A DISTANCE OF 615.42 FEET TO A POINT ON THE CENTERLINE OF LA MOINE RIVER; THENCE ALONG SAID CENTERLINE THE FOLLOWING FOUR COURSES, SOUTH 14 DEGREES 53 MINUTES 10 SECONDS EAST A DISTANCE OF 334.57 FEET; THENCE SOUTH 13 DEGREES 13 MINUTES 50 SECONDS EAST A DISTANCE OF 468.38 FEET; THENCE SOUTH 04 DEGREES 58 MINUTES 54 SECONDS EAST A DISTANCE OF 497.86 FEET; THENCE SOUTH 02 DEGREES 21 MINUTES 12 SECONDS EAST A DISTANCE OF 81.40 FEET TO A POINT ON THE SOUTH LINE OF SAID SOUTHWEST QUARTER; THENCE NORTH 85 DEGREES 20 MINUTES 07 SECONDS WEST ALONG THE SOUTH LINE OF SAID SOUTHWEST QUARTER A DISTANCE OF 878.17 FEET TO THE POINT OF BEGINNING, CONTAINING 65.09 ACRES MORE OR LESS BEING SUBJECTED TO ALL THAT PORTION BEING USED FOR PUBLIC ROAD PURPOSES.

SUGGESTED PROPERTY DESCRIPTION TRACT 2 - 96.82 ACRES

A TRACT OF LAND LYING IN PART OF THE NORTHEAST QUARTER OF SECTION 23 AND THE NORTHWEST QUARTER OF SECTION 24, TOWNSHIP 2 NORTH, RANGE 3 WEST OF THE FOURTH PRINCIPAL MERIDIAN, SCHUYLER COUNTY, ILLINOIS BEING MORE PARTICULARLY DESCRIBED AS FOLLOWS:

BEGINNING AT A FOUND IRON PIN AT THE NORTHWEST CORNER OF SAID NORTHWEST QUARTER; THENCE SOUTH 85 DEGREES 20 MINUTES 07 SECONDS EAST ALONG THE CENTERLINE OF SAID NORTHWEST QUARTER A DISTANCE OF 878.17 FEET TO A POINT ON THE CENTERLINE OF LA MOINE RIVER; THENCE ALONG SAID CENTERLINE THE FOLLOWING SIX COURSES, SOUTH 02 DEGREES 21 MINUTES 12 SECONDS EAST A DISTANCE OF 266.50 FEET; THENCE SOUTH 10 DEGREES 07 MINUTES 26 SECONDS WEST A DISTANCE OF 253.71 FEET; THENCE SOUTH 24 DEGREES 56 MINUTES 41 SECONDS WEST A DISTANCE OF 341.90 FEET; THENCE SOUTH 38 DEGREES 57 MINUTES 32 SECONDS WEST A DISTANCE OF 227.04 FEET; THENCE SOUTH 36 DEGREES 31 MINUTES 56 SECONDS WEST A DISTANCE OF 211.26 FEET; THENCE SOUTH 28 DEGREES 02 MINUTES 09 SECONDS WEST A DISTANCE OF 153.39 FEET TO A POINT ON THE SOUTH LINE OF THE NORTHWEST QUARTER OF SAID NORTHWEST QUARTER; THENCE NORTH 85 DEGREES 45 MINUTES 45 SECONDS WEST A DISTANCE OF 420.09 FEET TO A #5 REBAR SET AT THE SOUTHWEST CORNER OF THE NORTHWEST QUARTER OF SAID NORTHWEST QUARTER; THENCE NORTH 02 DEGREES 38 MINUTES 19 SECONDS WEST A DISTANCE OF 1349.54 FEET TO A #5 REBAR SET AT THE SOUTHEAST CORNER OF SAID NORTHEAST QUARTER; THENCE NORTH 86 DEGREES 58 MINUTES 26 SECONDS WEST ALONG THE SOUTH LINE OF SAID NORTHEAST QUARTER A DISTANCE OF 349.73 FEET TO THE CENTERLINE OF SLOUGH ROAD; THENCE ALONG SAID CENTERLINE THE FOLLOWING FOURTEEN COURSES, ALONG A CURVE TO THE LEFT HAVING AN ARC LENGTH OF 28.56 FEET, A RADIUS OF 80.00 FEET, A CHORD BEARING OF NORTH 70 DEGREES 42 MINUTES 40 SECONDS WEST, AND A CHORD LENGTH OF 28.43 FEET; THENCE NORTH 80 DEGREES 56 MINUTES 45 SECONDS WEST A DISTANCE OF 84.61 FEET; THENCE NORTH 89 DEGREES 52 MINUTES 56 SECONDS WEST A DISTANCE OF 115.26 FEET; THENCE ALONG A CURVE TO THE RIGHT HAVING AN ARC LENGTH OF 136.00 FEET, A RADIUS OF 90.00 FEET, A CHORD BEARING OF NORTH 46 DEGREES 35 MINUTES 37 SECONDS WEST, AND A CHORD LENGTH OF 123.42 FEET; THENCE NORTH 03 DEGREES 18 MINUTES 18 SECONDS WEST A DISTANCE OF 217.11 FEET; THENCE NORTH 09 DEGREES 07 MINUTES 21 SECONDS WEST A DISTANCE OF 114.29 FEET; THENCE ALONG A CURVE TO THE LEFT HAVING AN ARC LENGTH OF 178.57 FEET, A RADIUS OF 110.00 FEET, A CHORD BEARING OF NORTH 54 DEGREES 57 MINUTES 45 SECONDS WEST, AND A CHORD LENGTH OF 159.60 FEET; THENCE SOUTH 78 DEGREES 51 MINUTES 51 SECONDS WEST A DISTANCE OF 83.36 FEET; THENCE ALONG A CURVE TO THE RIGHT HAVING AN ARC LENGTH OF 71.89 FEET, A RADIUS OF 110.00 FEET, A CHORD BEARING OF NORTH 82 DEGREES 24 MINUTES 43 SECONDS WEST, AND A CHORD LENGTH OF 159.59 FEET; THENCE NORTH 07 DEGREES 41 MINUTES 56 SECONDS WEST A DISTANCE OF 271.65 FEET; THENCE NORTH 02 DEGREES 11 MINUTES 32 SECONDS WEST A DISTANCE OF 153.90 FEET; THENCE NORTH 01 DEGREES 50 MINUTES 41 SECONDS EAST A DISTANCE OF 1574.41 FEET TO A POINT ON THE NORTH LINE OF SAID NORTHEAST QUARTER; THENCE SOUTH 87 DEGREES 53 MINUTES 22 SECONDS EAST ALONG SAID NORTH LINE A DISTANCE OF 1342.21 FEET TO THE POINT OF BEGINNING, CONTAINING 96.82 ACRES MORE OR LESS BEING SUBJECTED TO ALL THAT PORTION BEING USED FOR PUBLIC ROAD PURPOSES.

SUGGESTED PROPERTY DESCRIPTION TRACT 3 - 121.51 ACRES

A TRACT OF LAND LYING IN PART OF THE SOUTHEAST QUARTER OF SECTION 23, TOWNSHIP 2 NORTH, RANGE 3 WEST OF THE FOURTH PRINCIPAL MERIDIAN, SCHUYLER COUNTY, ILLINOIS BEING MORE PARTICULARLY DESCRIBED AS FOLLOWS:

BEGINNING AT A FOUND IRON PIN AT THE NORTHWEST CORNER OF SAID SOUTHEAST QUARTER; THENCE SOUTH 86 DEGREES 58 MINUTES 26 SECONDS EAST A DISTANCE OF 2694.04 FEET TO A #5 REBAR SET AT THE NORTHEAST CORNER OF SAID SOUTHEAST QUARTER; THENCE SOUTH 01 DEGREES 12 MINUTES 28 SECONDS WEST ALONG THE EAST LINE OF SAID SOUTHEAST QUARTER A DISTANCE OF 1537.37 FEET TO A FOUND IRON PIN; THENCE LEAVING SAID EAST LINE NORTH 85 DEGREES 50 MINUTES 54 SECONDS WEST A DISTANCE OF 332.30 FEET TO A FOUND IRON PIN; THENCE SOUTH 12 DEGREES 17 MINUTES 55 SECONDS WEST A DISTANCE OF 778.02 FEET TO A FOUND IRON PIN; THENCE SOUTH 89 DEGREES 13 MINUTES 02 SECONDS WEST A DISTANCE OF 491.50 FEET TO A FOUND IRON PIN; THENCE NORTH 12 DEGREES 45 MINUTES 08 SECONDS EAST A DISTANCE OF 101.70 FEET TO A FOUND IRON PIN; THENCE NORTH 51 DEGREES 10 MINUTES 35 SECONDS WEST A DISTANCE OF 224.89 FEET TO A FOUND IRON PIN; THENCE NORTH 27 DEGREES 07 MINUTES 27 SECONDS EAST A DISTANCE OF 228.93 FEET TO A #5 REBAR SET; THENCE NORTH 87 DEGREES 08 MINUTES 14 SECONDS WEST A DISTANCE OF 1677.88 FEET TO A FOUND IRON PIN AT THE WEST LINE OF SAID SOUTHEAST QUARTER; THENCE NORTH 01 DEGREES 39 MINUTES 57 SECONDS EAST ALONG SAID WEST LINE A DISTANCE OF 1918.33 FEET TO THE POINT OF BEGINNING, CONTAINING 121.51 ACRES MORE OR LESS BEING SUBJECTED TO ALL THAT PORTION BEING USED FOR PUBLIC ROAD PURPOSES.

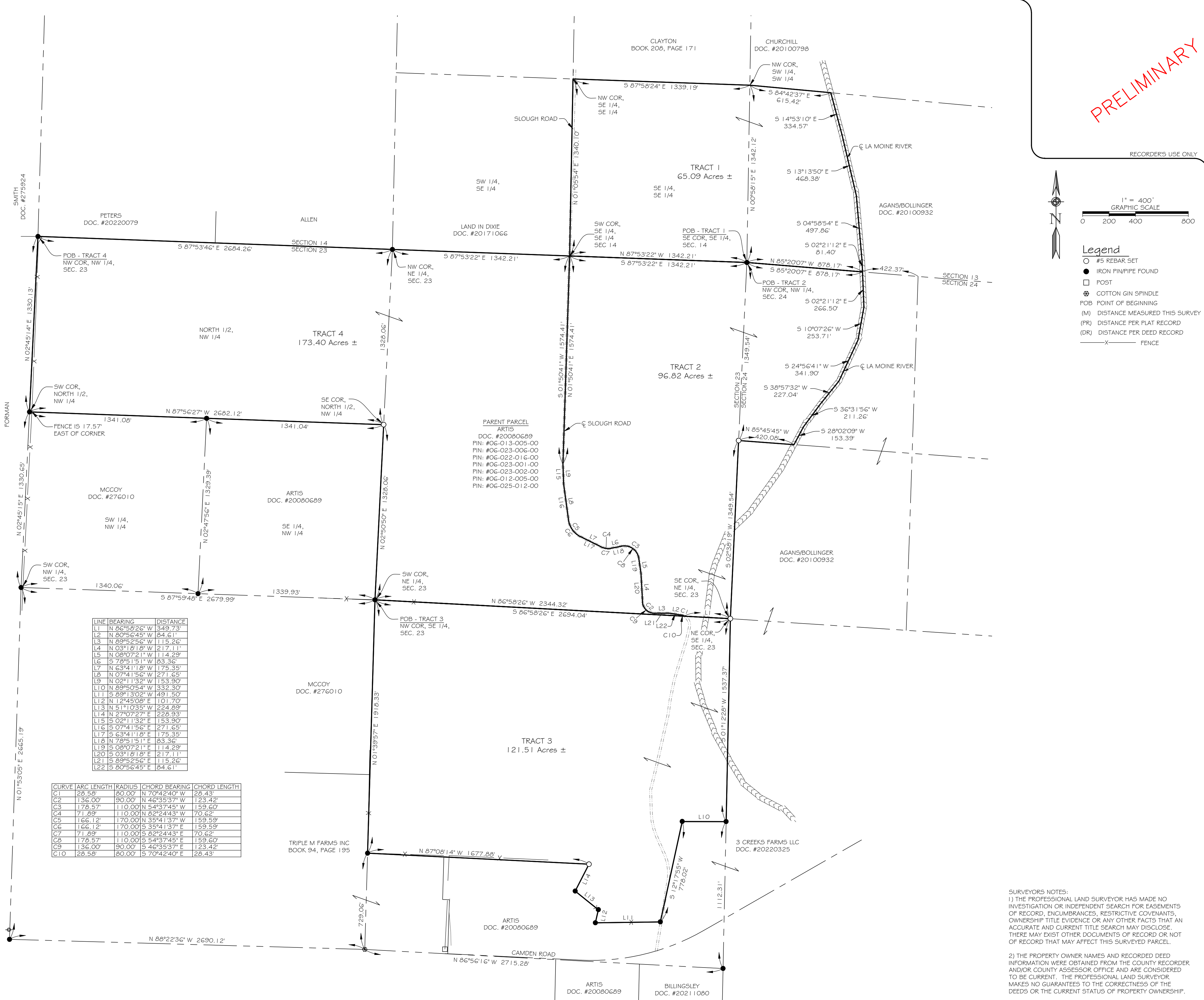
SUGGESTED PROPERTY DESCRIPTION TRACT 4 - 173.40 ACRES

A TRACT OF LAND LYING IN PART OF THE NORTHWEST AND NORTHEAST QUARTERS OF SECTION 23, TOWNSHIP 2 NORTH, RANGE 3 WEST OF THE FOURTH PRINCIPAL MERIDIAN, SCHUYLER COUNTY, ILLINOIS BEING MORE PARTICULARLY DESCRIBED AS FOLLOWS:

BEGINNING AT A FOUND IRON PIN AT THE NORTHWEST CORNER OF SAID NORTHWEST QUARTER; THENCE SOUTH 87 DEGREES 53 MINUTES 46 SECONDS EAST A DISTANCE OF 2684.26 FEET TO A FOUND IRON PIN AT THE NORTHWEST CORNER OF SAID NORTHEAST QUARTER; THENCE SOUTH 87 DEGREES 53 MINUTES 22 SECONDS EAST A DISTANCE OF 1342.21 FEET TO A POINT ON THE CENTERLINE OF SLOUGH ROAD; THENCE ALONG SAID CENTERLINE THE FOLLOWING FOURTEEN COURSES, SOUTH 01 DEGREES 50 MINUTES 41 SECONDS WEST A DISTANCE OF 1574.41 FEET; THENCE SOUTH 02 DEGREES 11 MINUTES 32 SECONDS EAST A DISTANCE OF 153.90 FEET; THENCE SOUTH 07 DEGREES 41 MINUTES 56 SECONDS EAST A DISTANCE OF 271.65 FEET; THENCE ALONG A CURVE TO THE LEFT HAVING AN ARC LENGTH OF 166.12 FEET, A RADIUS OF 170.00 FEET, A CHORD BEARING OF SOUTH 35 DEGREES 41 MINUTES 37 SECONDS WEST, AND A CHORD LENGTH OF 159.59 FEET; THENCE SOUTH 63 DEGREES 41 MINUTES 18 SECONDS EAST A DISTANCE OF 178.57 FEET; THENCE ALONG A CURVE TO THE LEFT HAVING AN ARC LENGTH OF 71.89 FEET, A RADIUS OF 110.00 FEET, A CHORD BEARING OF SOUTH 82 DEGREES 24 MINUTES 43 SECONDS EAST, AND A CHORD LENGTH OF 159.60 FEET; THENCE NORTH 78 DEGREES 51 MINUTES 51 SECONDS EAST A DISTANCE OF 83.36 FEET; THENCE ALONG A CURVE TO THE RIGHT HAVING AN ARC LENGTH OF 178.57 FEET, A RADIUS OF 110.00 FEET, A CHORD BEARING OF SOUTH 54 DEGREES 57 MINUTES 45 SECONDS EAST, AND A CHORD LENGTH OF 159.60 FEET; THENCE SOUTH 08 DEGREES 07 MINUTES 21 SECONDS EAST A DISTANCE OF 114.29 FEET; THENCE SOUTH 03 DEGREES 18 MINUTES 18 SECONDS EAST A DISTANCE OF 217.11 FEET; THENCE ALONG A CURVE TO THE LEFT HAVING AN ARC LENGTH OF 136.00 FEET, A RADIUS OF 90.00 FEET, A CHORD BEARING OF SOUTH 46 DEGREES 35 MINUTES 37 SECONDS EAST, AND A CHORD LENGTH OF 123.42 FEET; THENCE SOUTH 89 DEGREES 52 MINUTES 56 SECONDS EAST A DISTANCE OF 115.26 FEET; THENCE SOUTH 80 DEGREES 56 MINUTES 45 SECONDS EAST A DISTANCE OF 84.61 FEET; THENCE ALONG A CURVE TO THE RIGHT HAVING AN ARC LENGTH OF 136.00 FEET, A RADIUS OF 90.00 FEET, A CHORD BEARING OF NORTH 46 DEGREES 35 MINUTES 37 SECONDS WEST, AND A CHORD LENGTH OF 123.42 FEET; THENCE NORTH 80 DEGREES 56 MINUTES 45 SECONDS WEST A DISTANCE OF 115.26 FEET; THENCE ALONG A CURVE TO THE LEFT HAVING AN ARC LENGTH OF 136.00 FEET, A RADIUS OF 90.00 FEET, A CHORD BEARING OF NORTH 46 DEGREES 35 MINUTES 37 SECONDS WEST, AND A CHORD LENGTH OF 123.42 FEET; THENCE NORTH 09 DEGREES 07 MINUTES 21 SECONDS WEST A DISTANCE OF 114.29 FEET; THENCE ALONG A CURVE TO THE LEFT HAVING AN ARC LENGTH OF 178.57 FEET, A RADIUS OF 110.00 FEET, A CHORD BEARING OF NORTH 54 DEGREES 57 MINUTES 45 SECONDS WEST, AND A CHORD LENGTH OF 159.60 FEET; THENCE SOUTH 78 DEGREES 51 MINUTES 51 SECONDS WEST A DISTANCE OF 83.36 FEET; THENCE ALONG A CURVE TO THE RIGHT HAVING AN ARC LENGTH OF 71.89 FEET, A RADIUS OF 110.00 FEET, A CHORD BEARING OF NORTH 82 DEGREES 24 MINUTES 43 SECONDS WEST, AND A CHORD LENGTH OF 159.59 FEET; THENCE NORTH 07 DEGREES 41 MINUTES 56 SECONDS WEST A DISTANCE OF 271.65 FEET; THENCE NORTH 02 DEGREES 11 MINUTES 32 SECONDS WEST A DISTANCE OF 153.90 FEET; THENCE NORTH 01 DEGREES 50 MINUTES 41 SECONDS EAST A DISTANCE OF 1574.41 FEET TO A POINT ON THE NORTH LINE OF SAID NORTHEAST QUARTER; THENCE SOUTH 87 DEGREES 53 MINUTES 22 SECONDS EAST ALONG SAID NORTH LINE A DISTANCE OF 1342.21 FEET TO THE POINT OF BEGINNING, CONTAINING 173.40 ACRES MORE OR LESS BEING SUBJECTED TO ALL THAT PORTION BEING USED FOR PUBLIC ROAD PURPOSES.

THIS IS A RESULT OF MY SURVEY AS PREPARED BY ME OR UNDER MY DIRECT SUPERVISION DURING JANUARY 2024, WHICH I CERTIFY TO BE TRUE AND CORRECT TO THE BEST OF MY KNOWLEDGE AND BELIEF, AND THAT I AM A PROFESSIONAL SURVEYOR CONFORMING TO THE CURRICULAR AND MINIMUM STANDARDS FOR A BOUNDARY SURVEY.

NORMAN D. QUERRECK ILLINOIS PROFESSIONAL LAND SURVEYOR #35-3159 LICENSE EXPIRES NOVEMBER 30, 2024 ILLINOIS PROFESSIONAL DESIGN FIRM #184-006044



Tables containing line bearings, distances, curve data (C1-C10), and arc lengths for the survey.

Legend, scale bar (1" = 400'), north arrow, and recorder's use only section.

Vertical title block containing 'PLAT OF SURVEY SEC. 13, 14, 23 & 24, T2N, R3W 4TH PM, SCHUYLER COUNTY, ILLINOIS', 'FOUR POINTS LAND SURVEYING & ENGINEERING, INC.', and a revision table.

SURVEYOR'S NOTES: 1) THE PROFESSIONAL LAND SURVEYOR HAS MADE NO INVESTIGATION OR INDEPENDENT SEARCH FOR EASEMENTS OF RECORD, ENCUMBRANCES, RESTRICTIVE COVENANTS, OWNERSHIP TITLE EVIDENCE OR ANY OTHER FACTS THAT AN ACCURATE AND CURRENT TITLE SEARCH MAY DISCLOSE... 2) THE PROPERTY OWNER NAMES AND RECORDED DEED INFORMATION WERE OBTAINED FROM THE COUNTY RECORDER AND/OR COUNTY ASSESSOR OFFICE AND ARE CONSIDERED TO BE CURRENT... 3) BASIS OF BEARINGS IS BASED UPON THE ILLINOIS STATE PLANE COORDINATE SYSTEM OF 1983, XXX ZONE... 4) BY GRAPHIC PLOTTING ONLY, THIS PROPERTY IS LOCATED IN ZONE 'X' OR AREAS DETERMINED TO BE OUTSIDE THE 0.2% ANNUAL CHANCE FLOODPLAIN AS IDENTIFIED FOR THE COUNTY OF SCHUYLER, ILLINOIS BY THE FEDERAL EMERGENCY MANAGEMENT AGENCY ON FLOOD INSURANCE RATE MAP NUMBER 17169C0200D, DATED AUGUST 5, 2010 AND IS NOT IN A SPECIAL FLOOD HAZARD AREA... NO FIELD SURVEYING WAS PERFORMED TO DETERMINE THIS ZONE... 5) THE FIELD WORK WAS COMPLETED ON MONTH DAY, YEAR