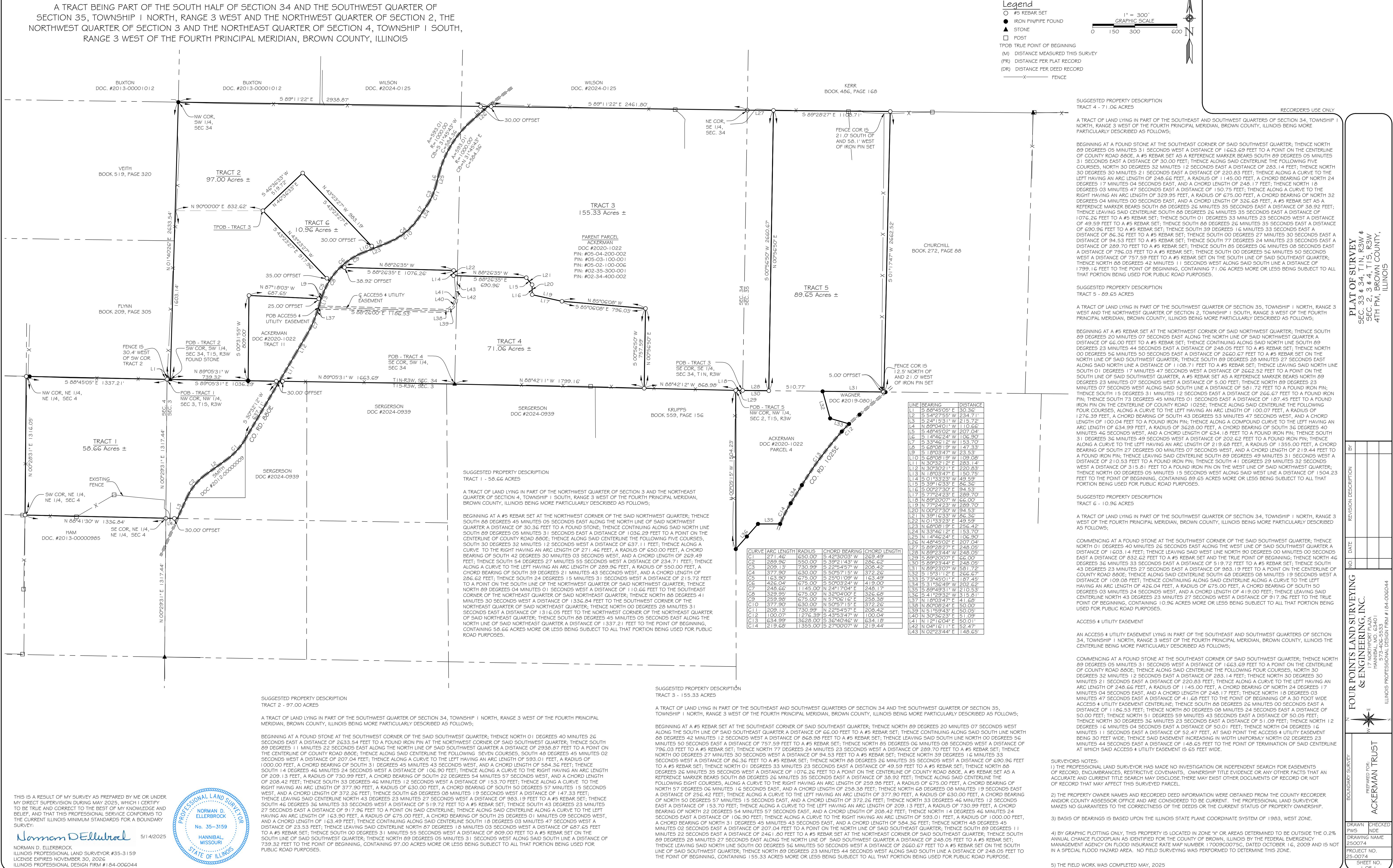
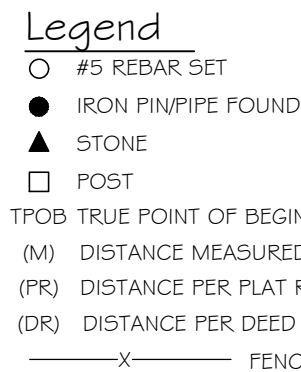


A TRACT BEING PART OF THE SOUTH HALF OF SECTION 34 AND THE SOUTHWEST QUARTER OF SECTION 35, TOWNSHIP 1 NORTH, RANGE 3 WEST AND THE NORTHWEST QUARTER OF SECTION 2, THE NORTHWEST QUARTER OF SECTION 3 AND THE NORTHEAST QUARTER OF SECTION 4, TOWNSHIP 1 SOUTH, RANGE 3 WEST OF THE FOURTH PRINCIPAL MERIDIAN, BROWN COUNTY, ILLINOIS



A TRACT BEING PART OF THE SOUTH HALF OF SECTION 34 AND THE SOUTHWEST QUARTER OF SECTION 35, TOWNSHIP 1 NORTH, RANGE 3 WEST AND THE NORTHWEST QUARTER OF SECTION 2, THE NORTHWEST QUARTER OF SECTION 3 AND THE NORTHEAST QUARTER OF SECTION 4, TOWNSHIP 1 SOUTH, RANGE 3 WEST OF THE FOURTH PRINCIPAL MERIDIAN, BROWN COUNTY, ILLINOIS



RECORDED'S USE ONLY

BEGINNING AT A FOUND STILE AT THE SOUTHEAST CORNER OF SAID SOUTHWEST QUARTER, THENCE NORTH 89 DEGREES 05 MINUTES 31 SECONDS WEST A DISTANCE OF 1663.69 FEET TO A POINT ON THE CENTERLINE OF COUNTY ROAD 880E, A #5 REBAR SET AS A REFERENCE MARKER BEARS SOUTH 89 DEGREES 05 MINUTES 31 SECONDS EAST A DISTANCE OF 30.00 FEET; THENCE ALONG SAID CENTERLINE THE FOLLOWING FIVE POINTS: 1) A REFERENCE MARKER BEARS NORTH 89 DEGREES 05 MINUTES 31 SECONDS EAST A DISTANCE OF 30 DEGREES 30 MINUTES 21 SECONDS EAST A DISTANCE OF 220.83 FEET; THENCE ALONG A CURVE TO THE LEFT HAVING AN ARC LENGTH OF 246.66 FEET, A RADIUS OF 1145.00 FEET, A CHORD BEARING OF NORTH 24 DEGREES 17 MINUTES 04 SECONDS EAST, AND A CHORD LENGTH OF 245.17 FEET; THENCE NORTH 18 DEGREES 03 MINUTES 47 SECONDS EAST A DISTANCE OF 150.75 FEET; THENCE ALONG A CURVE TO THE RIGHT HAVING AN ARC LENGTH OF 246.66 FEET, A RADIUS OF 1145.00 FEET, A CHORD BEARING OF NORTH 32 DEGREES 03 MINUTES 00 SECONDS EAST, AND A CHORD LENGTH OF 245.17 FEET; A #5 REBAR SET AS A REFERENCE MARKER BEARS SOUTH 88 DEGREES 26 MINUTES 35 SECONDS EAST A DISTANCE OF 38.92 FEET; THENCE LEAVING SAID CENTERLINE SOUTH 88 DEGREES 26 MINUTES 35 SECONDS EAST A DISTANCE OF 1076.26 FEET TO A #5 REBAR SET; THENCE SOUTH 01 DEGREES 33 MINUTES 23 SECONDS WEST A DISTANCE OF 49.59 FEET TO A #5 REBAR SET; THENCE SOUTH 88 DEGREES 26 MINUTES 35 SECONDS EAST A DISTANCE OF 1076.26 FEET TO A #5 REBAR SET; THENCE SOUTH 01 DEGREES 33 MINUTES 23 SECONDS WEST A DISTANCE OF 86.36 FEET TO A #5 REBAR SET; THENCE SOUTH 00 DEGREES 27 MINUTES 30 SECONDS EAST A DISTANCE OF 94.53 FEET TO A #5 REBAR SET; THENCE SOUTH 77 DEGREES 24 MINUTES 23 SECONDS EAST A DISTANCE OF 289.70 FEET TO A #5 REBAR SET; THENCE SOUTH 05 DEGREES 06 MINUTES 08 SECONDS EAST A DISTANCE OF 796.03 FEET TO A #5 REBAR SET; THENCE SOUTH 04 DEGREES 56 MINUTES 50 SECONDS WEST A DISTANCE OF 157.89 FEET TO A #5 REBAR SET ON THE SOUTH LINE OF SAID SOUTHEAST QUARTER, BEARING OF THE LINE BEING 179.91 DEGREES 06 MINUTES 50 SECONDS EAST, A DISTANCE OF 179.91 FEET TO THE POINT OF BEGINNING, CONTAINING 71.06 ACRES MORE OR LESS BEING SUBJECT TO ALL THAT PORTION BEING USED FOR PUBLIC ROAD PURPOSES,

A TRACT OF LAND LYING IN PART OF THE SOUTHWEST QUARTER OF SECTION 35, TOWNSHIP 1 NORTH, RANGE 3 WEST AND THE NORTHWEST QUARTER OF SECTION 2, TOWNSHIP 1 SOUTH, RANGE 3 WEST OF THE FOURTH PRINCIPAL MERIDIAN, BROWN COUNTY, ILLINOIS BEING MORE PARTICULARLY DESCRIBED AS FOLLOWS:

BEGINNING AT A #5 REBAR AT THE NORTHWEST CORNER OF SAID NORTHWEST QUARTER, THENCE SOUTH 89 DEGREES 20 MINUTES 07 SECONDS EAST ALONG THE NORTH LINE OF SAID NORTHWEST QUARTER A DISTANCE OF 66.00 FEET TO A #5 REBAR SET, THENCE CONTINUING ALONG SAID NORTH LINE SOUTH 89 DEGREES 20 MINUTES 07 SECONDS EAST A DISTANCE OF 27.71 FEET TO A #5 REBAR SET, THENCE SOUTH 00 DEGREES 56 MINUTES 50 SECONDS EAST A DISTANCE OF 2660.67 FEET TO A #5 REBAR SET ON THE NORTH LINE OF SAID SOUTHWEST QUARTER; THENCE SOUTH 89 DEGREES 28 MINUTES 27 SECONDS EAST A DISTANCE OF 27.71 FEET TO A #5 REBAR SET, THENCE SOUTH 01 DEGREES 17 MINUTES 47 SECONDS WEST A DISTANCE OF 2662.52 FEET TO A POINT ON THE SOUTH LINE OF SAID SOUTHWEST QUARTER, A #5 REBAR SET AS A REFERENCE MARK BEARS NORTH 89 DEGREES 23 MINUTES 27 SECONDS WEST A DISTANCE OF 27.71 FEET TO A #5 REBAR SET, THENCE SOUTH 01 DEGREES 17 MINUTES 47 SECONDS WEST A DISTANCE OF 2662.52 FEET TO A FOUND IRON PIN; THENCE SOUTH 15 DEGREES 33 MINUTES 12 SECONDS EAST A DISTANCE OF 266.67 FEET TO A FOUND IRON PIN; THENCE SOUTH 73 DEGREES 45 MINUTES 01 SECONDS EAST A DISTANCE OF 187.45 FEET TO A FOUND IRON PIN; THENCE SOUTH 15 DEGREES 33 MINUTES 12 SECONDS WEST A DISTANCE OF 266.67 FEET TO A FOUND IRON PIN, ALONG A CURVE TO THE LEFT HAVING AN ARC LENGTH OF 100.07 FEET, A RADIUS OF 1276.39 FEET, A CHORD BEARING OF SOUTH 43 DEGREES 53 MINUTES 47 SECONDS WEST, AND A CHORD LENGTH OF 634.99 FEET, A RADIUS OF 3628.00 FEET, A CHORD BEARING OF SOUTH 36 DEGREES 40 MINUTES 46 SECONDS WEST, AND A CHORD LENGTH OF 634.19 FEET TO A FOUND IRON PIN; THENCE SOUTH 31 DEGREES 36 MINUTES 49 SECONDS WEST A DISTANCE OF 202.62 FEET TO A FOUND IRON PIN; THENCE SOUTH 15 DEGREES 33 MINUTES 12 SECONDS WEST A DISTANCE OF 266.67 FEET TO A FOUND IRON PIN; THENCE BEARING OF SOUTH 27 DEGREES 00 MINUTES 07 SECONDS WEST, AND A CHORD LENGTH OF 219.94 FEET TO A FOUND IRON PIN; THENCE LEAVING SAID CENTERLINE SOUTH 69 DEGREES 49 MINUTES 31 SECONDS WEST A DISTANCE OF 27.71 FEET TO A #5 REBAR SET, THENCE SOUTH 01 DEGREES 17 MINUTES 47 SECONDS WEST A DISTANCE OF 315.81 FEET TO A FOUND IRON PIN ON THE WEST LINE OF SAID NORTHWEST QUARTER; THENCE SOUTH 00 DEGREES 05 MINUTES 15 SECONDS WEST ALONG SAID WEST LINE A DISTANCE OF 1504.24 FEET TO THE POINT OF BEGINNING, CONTAINING 89.65 ACRES MORE OR LESS BEING SUBJECT TO ALL THAT HEREINAFTER MENTIONED, USED FOR THE PURPOSES OF THIS CERTIFICATE.

A TRACT OF LAND LYING IN PART OF THE SOUTHWEST QUARTER OF SECTION 34, TOWNSHIP 1 NORTH, RANGE 3 WEST OF THE FOURTH PRINCIPAL MERIDIAN, BROWN COUNTY, ILLINOIS BEING MORE PARTICULARLY DESCRIBED AS FOLLOWS:

COMMENCING AT A FOUNDATION AT THE SOUTHWEST CORNER OF THE SAID SOUTHWEST QUARTER, THENCE NORTH 01 DEGREES 40 MINUTES 26 SECONDS EAST ALONG THE WEST LINE OF SAID SOUTHWEST QUARTER A DISTANCE OF 1603.14 FEET; THENCE LEAVING SAID WEST LINE NORTH 90 DEGREES 00 MINUTES 00 SECONDS EAST ALONG THE EAST LINE OF SAID SOUTHWEST QUARTER A DISTANCE OF 1603.14 FEET; THENCE LEAVING SAID EAST LINE SOUTH 89 DEGREES 33 MINUTES 33 SECONDS EAST A DISTANCE OF 519.72 FEET TO A #5 REBAR SET, THENCE SOUTH 43 DEGREES 23 MINUTES 27 SECONDS EAST A DISTANCE OF 983.19 FEET TO A POINT ON THE CENTERLINE OF COUNTY ROAD 8400; THENCE ALONG SAID CENTERLINE SOUTH 68 DEGREES 08 MINUTES 19 SECONDS WEST A DISTANCE OF 103.00 FEET TO A POINT ON THE CENTERLINE OF COUNTY ROAD 8400; THENCE ALONG SAID CENTERLINE SOUTH 68 DEGREES 08 MINUTES 19 SECONDS WEST HAVING AN ARC LENGTH OF 426.04 FEET, A RADIUS OF 675.00 FEET, A CHORD BEARING OF SOUTH 50 DEGREES 03 MINUTES 24 SECONDS WEST, AND A CHORD LENGTH OF 419.00 FEET; THENCE LEAVING SAID CENTERLINE NORTH 43 DEGREES 23 MINUTES 27 SECONDS WEST A DISTANCE OF 917.96 FEET TO THE TRUE POINT OF BEGINNING. BEING 0.36 ACRES MORE OR LESS BEING SUBJECT TO ALL THAT FORTION BEING USED FOR PUBLIC ROAD PURPOSES.

ACCESS & UTILITY EASEMENT

AN ACCESS & UTILITY EASEMENT LYING IN PART OF THE SOUTHEAST AND SOUTHWEST QUARTERS OF SECTION 34, TOWNSHIP 1 NORTH, RANGE 3 WEST OF THE FOURTH PRINCIPAL MERIDIAN, BROWN COUNTY, ILLINOIS THE CENTERLINE BEING MORE PARTICULARLY DESCRIBED AS FOLLOWS:

COMMENCING AT A FOUNDATION AT THE SOUTHEAST CORNER OF SAID SOUTHWEST QUARTER; THENCE NORTH 89 DEGREES 05 MINUTES 31 SECONDS WEST A DISTANCE OF 1663.69 FEET TO A POINT ON THE CENTERLINE OF COUNTY ROAD 480E; THENCE ALONG SAID CENTERLINE THE FOLLOWING FOUR COURSES, NORTH 30 DEGREES 32 MINUTES 12 SECONDS EAST A DISTANCE OF 283.14 FEET; THENCE NORTH 30 DEGREES 30 MINUTES 30 SECONDS EAST A DISTANCE OF 114.45 FEET; THENCE NORTH 24 DEGREES 17 MINUTES 18 SECONDS EAST AN ARC LENGTH OF 248.66 FEET, A RADIUS OF 1144.50 FEET, A CHORD BEARING OF NORTH 24 DEGREES 17 MINUTES 04 SECONDS EAST, AND A CHORD LENGTH OF 248.17 FEET; THENCE NORTH 18 DEGREES 03 MINUTES 47 SECONDS EAST A DISTANCE OF 41.68 FEET TO THE POINT OF BEGINNING OF A 30 FOOT WIDE ACCESS & UTILITY EASEMENT CENTERLINE; THENCE SOUTH 88 DEGREES 26 MINUTES 00 SECONDS EAST A DISTANCE OF 66.27 FEET; THENCE SOUTH 88 DEGREES 26 MINUTES 00 SECONDS EAST A DISTANCE OF 50.01 FEET; THENCE NORTH 81 DEGREES 59 MINUTES 58 SECONDS EAST A DISTANCE OF 50.05 FEET; THENCE NORTH 30 DEGREES 36 MINUTES 23 SECONDS EAST A DISTANCE OF 51.09 FEET; THENCE NORTH 12 DEGREES 16 MINUTES 04 SECONDS EAST A DISTANCE OF 50.01 FEET; THENCE NORTH 04 DEGREES 16 MINUTES 11 SECONDS EAST A DISTANCE OF 52.47 FEET, AT SAID POINT THE ACCESS & UTILITY EASEMENT BEING 30 FEET WIDE; THENCE SAID EASEMENT INCREASING IN WIDTH UNIFORMLY NORTH 02 DEGREES 23 MINUTES 58 SECONDS EAST A DISTANCE OF 16.68 FEET TO THE POINT OF TERMINATION OF SAID CENTERLINE AT WHICH SAID ACCESS & UTILITY EASEMENT IS 65 FEET WIDE.

SURVEYORS NOTES

1) THE PROFESSIONAL LAND SURVEYOR HAS MADE NO INVESTIGATION OR INDEPENDENT SEARCH FOR EASEMENTS OF RECORD, ENCUMBRANCES, RESTRICTIVE COVENANTS, OWNERSHIP TITLE EVIDENCE OR ANY OTHER FACTS THAT AN ACCURATE AND CURRENT TITLE SEARCH MAY DISCLOSE. THERE MAY EXIST OTHER DOCUMENTS OF RECORD OR NOT OF RECORD THAT MAY AFFECT THIS SURVEYED PARCEL.

2) THE PROPERTY OWNER NAMES AND RECORDED DEED INFORMATION WERE OBTAINED FROM THE COUNTY RECORDER AND/OR COUNTY ASSESSOR OFFICE AND ARE CONSIDERED TO BE CURRENT. THE PROFESSIONAL LAND SURVEYOR MAKES NO GUARANTEES TO THE CORRECTNESS OF THE DEEDS OR THE CURRENT STATUS OF PROPERTY OWNERSHIP.

3) BASIS OF BEARINGS IS BASED UPON THE ILLINOIS STATE PLANE COORDINATE SYSTEM OF 1983, WEST ZONE.

4) BY GRAPHIC PLOTTING ONLY, THIS PROPERTY IS LOCATED IN ZONE "X" OR AREAS DETERMINED TO BE OUTSIDE THE 0.2% ANNUAL CHANCE FLOODPLAIN AS IDENTIFIED FOR THE COUNTY OF BROWN, ILLINOIS BY THE FEDERAL EMERGENCY MANAGEMENT AGENCY ON FLOOD INSURANCE RATE MAP NUMBER 17009C0075C, DATED OCTOBER 16, 2009 AND IS NOT IN A SPECIAL FLOOD HAZARD AREA. NO FIELD SURVEYING WAS PERFORMED TO DETERMINE THIS ZONE.

5) THE FIELD WORK WAS COMPLETED MAY, 2025

SUGGESTED PROPERTY DESCRIPTION
TRACT 2 - 97.00 ACRES

A TRACT OF LAND LYING IN PART OF THE SOUTHWEST QUARTER OF SECTION 34, TOWNSHIP 1 NORTH, RANGE 3 WEST OF THE FOURTH PRINCIPAL MERIDIAN, BROWN COUNTY, ILLINOIS BEING MORE PARTICULARLY DESCRIBED AS FOLLOWS:

BEGINNING AT A FOUND STONE AT THE SOUTHWEST CORNER OF THE SAID SOUTHWEST QUARTER, THENCE NORTH 01 DEGREES 40 MINUTES 26 SECONDS EAST A DISTANCE OF 2633.54 FEET TO A FOUND IRON PIN AT THE NORTHWEST CORNER OF SAID SOUTHWEST QUARTER; THENCE SOUTH 89 DEGREES 11 MINUTES 22 SECONDS EAST ALONG THE NORTH LINE OF SAID SOUTHWEST QUARTER A DISTANCE OF 2938.87 FEET TO A POINT ON THE NORTH LINE OF SAID SOUTHWEST QUARTER; THENCE SOUTH 14 DEGREES 46 MINUTES 36 SECONDS WEST A DISTANCE OF 207.04 FEET; THENCE ALONG A CURVE TO THE LEFT HAVING AN ARC LENGTH OF 593.01 FEET, A RADIUS OF 1000.00 FEET, A CHORD BEARING OF SOUTH 31 DEGREES 45 MINUTES 43 SECONDS WEST, AND A CHORD LENGTH OF 584.36 FEET; THENCE SOUTH 14 DEGREES 46 MINUTES 24 SECONDS WEST A DISTANCE OF 106.90 FEET; THENCE ALONG A CURVE TO THE RIGHT HAVING AN ARC LENGTH OF 206.42 FEET, A RADIUS OF 1000.00 FEET, A CHORD BEARING OF SOUTH 31 DEGREES 45 MINUTES 43 SECONDS WEST, AND A CHORD LENGTH OF 206.42 FEET; THENCE SOUTH 33 DEGREES 46 MINUTES 12 SECONDS WEST A DISTANCE OF 153.70 FEET; THENCE ALONG A CURVE TO THE RIGHT HAVING AN ARC LENGTH OF 377.30 FEET, A RADIUS OF 630.00 FEET, A CHORD BEARING OF SOUTH 50 DEGREES 57 MINUTES 15 SECONDS WEST, AND A CHORD LENGTH OF 372.26 FEET; THENCE SOUTH 66 DEGREES 08 MINUTES 19 SECONDS WEST A DISTANCE OF 147.33 FEET; THENCE SOUTH 46 DEGREES 36 MINUTES 33 SECONDS WEST A DISTANCE OF 519.72 FEET TO A #5 REBAR SET; THENCE SOUTH 43 DEGREES 23 MINUTES 27 SECONDS EAST A DISTANCE OF 917.96 FEET TO A POINT ON SAID CENTERLINE, THENCE ALONG SAID CENTERLINE ALONG A CURVE TO THE LEFT HAVING AN ARC LENGTH OF 163.90 FEET, A RADIUS OF 675.00 FEET, A CHORD BEARING OF SOUTH 25 DEGREES 01 MINUTES 09 SECONDS WEST, AND A CHORD LENGTH OF 163.90 FEET; THENCE SOUTH 43 DEGREES 23 MINUTES 27 SECONDS EAST A DISTANCE OF 809.00 FEET TO A #5 REBAR SET; THENCE LEAVING SAID CENTERLINE NORTH 87 DEGREES 16 MINUTES 03 SECONDS WEST A DISTANCE OF 687.65 FEET TO A #5 REBAR SET; THENCE SOUTH 00 DEGREES 31 MINUTES 55 SECONDS WEST A DISTANCE OF 809.00 FEET TO A #5 REBAR SET ON THE SOUTH LINE OF SAID SOUTHWEST QUARTER, THENCE NORTH 89 DEGREES 05 MINUTES 31 SECONDS WEST ALONG SAID SOUTH LINE A DISTANCE OF 2633.54 FEET TO THE POINT OF BEGINNING, CONTAINING 97.00 ACRES MORE OR LESS BEING SUBJECT TO ALL THAT PORTION BEING USED FOR PUBLIC ROAD PURPOSES.

SUGGESTED PROPERTY DESCRIPTION
TRACT 3 - 155.33 ACRES

A TRACT OF LAND LYING IN PART OF THE SOUTHEAST AND SOUTHWEST QUARTERS OF SECTION 34 AND THE SOUTHWEST QUARTER OF SECTION 35, TOWNSHIP 1 NORTH, RANGE 3 WEST OF THE FOURTH PRINCIPAL MERIDIAN, BROWN COUNTY, ILLINOIS BEING MORE PARTICULARLY DESCRIBED AS FOLLOWS:

BEGINNING AT A #5 REBAR SET AT THE SOUTHEAST CORNER OF SAID SOUTHWEST QUARTER; THENCE NORTH 89 DEGREES 20 MINUTES 07 SECONDS WEST ALONG THE SOUTH LINE OF SAID SOUTHWEST QUARTER A DISTANCE OF 66.00 FEET TO A #5 REBAR SET; THENCE CONTINUING ALONG SAID SOUTH LINE NORTH 88 DEGREES 42 MINUTES 12 SECONDS WEST A DISTANCE OF 866.98 FEET TO A #5 REBAR SET; THENCE LEAVING SAID SOUTH LINE NORTH 00 DEGREES 56 MINUTES 50 SECONDS EAST A DISTANCE OF 757.59 FEET TO A #5 REBAR SET; THENCE NORTH 85 DEGREES 06 MINUTES 08 SECONDS WEST A DISTANCE OF 100.00 FEET TO A #5 REBAR SET; THENCE NORTH 89 DEGREES 20 MINUTES 07 SECONDS WEST ALONG THE NORTH LINE OF SAID SOUTHWEST QUARTER NORTH 00 DEGREES 27 MINUTES 30 SECONDS WEST A DISTANCE OF 94.53 FEET TO A #5 REBAR SET; THENCE NORTH 39 DEGREES 16 MINUTES 33 SECONDS WEST A DISTANCE OF 86.36 FEET TO A #5 REBAR SET; THENCE NORTH 88 DEGREES 26 MINUTES 35 SECONDS WEST A DISTANCE OF 690.96 FEET TO A #5 REBAR SET; THENCE NORTH 01 DEGREES 33 MINUTES 23 SECONDS EAST A DISTANCE OF 49.59 FEET TO A #5 REBAR SET; THENCE NORTH 88 DEGREES 26 MINUTES 35 SECONDS WEST A DISTANCE OF 1076.26 FEET TO A POINT ON THE CENTERLINE OF COUNTY ROAD 880E, A #5 REBAR SET AS A REFERENCE MARKER BEARS SOUTH 88 DEGREES 26 MINUTES 35 SECONDS EAST A DISTANCE OF 38.92 FEET; THENCE ALONG SAID CENTERLINE THE NORTH 88 DEGREES 26 MINUTES 35 SECONDS WEST A DISTANCE OF 108.98 FEET TO A POINT ON THE CENTERLINE OF COUNTY ROAD 880E, A #5 REBAR SET; THENCE NORTH 57 DEGREES 05 MINUTES 16 SECONDS EAST, AND A CHORD LENGTH OF 258.38 FEET, THENCE NORTH 68 DEGREES 08 MINUTES 19 SECONDS EAST A DISTANCE OF 256.42 FEET; THENCE ALONG A CURVE TO THE LEFT HAVING AN ARC LENGTH OF 377.90 FEET, A RADIUS OF 630.00 FEET, A CHORD BEARING OF NORTH 50 DEGREES 57 MINUTES 15 SECONDS EAST, AND A CHORD LENGTH OF 372.26 FEET; THENCE NORTH 33 DEGREES 46 MINUTES 12 SECONDS EAST A DISTANCE OF 153.70 FEET; THENCE ALONG A CURVE TO THE LEFT HAVING AN ARC LENGTH OF 209.13 FEET, A RADIUS OF 730.00 FEET, A CHORD BEARING OF NORTH 50 DEGREES 57 MINUTES 15 SECONDS EAST, AND A CHORD LENGTH OF 208.42 FEET; THENCE NORTH 14 DEGREES 46 MINUTES 52 SECONDS EAST A DISTANCE OF 10.90 FEET TO A POINT ON THE CURVE TO THE RIGHT HAVING AN ARC LENGTH OF 203.01 FEET, A RADIUS OF 730.00 FEET, A CHORD BEARING OF NORTH 31 DEGREES 45 MINUTES 43 SECONDS EAST, AND A CHORD LENGTH OF 584.36 FEET; THENCE NORTH 48 DEGREES 45 MINUTES 02 SECONDS EAST A DISTANCE OF 207.04 FEET TO A POINT ON THE NORTH LINE OF SAID SOUTHWEST QUARTER; THENCE SOUTH 89 DEGREES 11 MINUTES 22 SECONDS EAST A DISTANCE OF 2461.80 FEET TO A #5 REBAR SET AT THE NORTHEAST CORNER OF SAID SOUTHWEST QUARTER; THENCE SOUTH 89 DEGREES 26 MINUTES 27 SECONDS EAST ALONG THE NORTH LINE OF SAID SOUTHWEST QUARTER A DISTANCE OF 248.05 FEET TO A #5 REBAR SET; THENCE SOUTH 89 DEGREES 26 MINUTES 27 SECONDS EAST ALONG THE NORTH LINE OF SAID SOUTHWEST QUARTER A DISTANCE OF 248.05 FEET TO A #5 REBAR SET; THENCE SOUTH 89 DEGREES 26 MINUTES 27 SECONDS EAST ALONG THE NORTH LINE OF SAID SOUTHWEST QUARTER A DISTANCE OF 248.05 FEET TO THE POINT OF BEGINNING, CONTAINING 155.33 ACRES MORE OR LESS BEING SUBJECT TO ALL THAT PORTION BEING USED FOR PUBLIC ROAD PURPOSE.

THIS IS A RESULT OF MY SURVEY AS PREPARED BY ME OR UNDER MY DIRECT SUPERVISION DURING MAY 2025, WHICH I CERTIFY TO BE TRUE AND CORRECT TO THE BEST OF MY KNOWLEDGE AND BELIEF, AND THAT THIS PROFESSIONAL SERVICE CONFORMS TO THE CURRENT ILLINOIS MINIMUM STANDARDS FOR A BOUNDARY SURVEY:

NORMAN D. ELLERBROCK
ILLINOIS PROFESSIONAL LAND SURVEYOR #35-3159
LICENSE EXPIRES NOVEMBER 30, 2026
ILLINOIS PROFESSIONAL DESIGN FIRM #184-00604



PLAT OF SURVEY
SEC. 33 & 34, T1N, R3W
SEC. 2, 3 & 4, T1S, R3W
4TH PM, BROWN COUNTY
ILLINOIS

| | |
|-------------|----|
| DESCRIPTION | BY |
|-------------|----|

FOUR POINTS LAND SURVEYING

ACKERMAN TRUST
PREPARED FOR:
17 NORTHPORT PLAZA
HANNIBAL, MO. 63401

573-406-5533
ILLINOIS PROFESSIONAL DESIGN FIRM #181-006044

CKE
ME
D.