



United States  
Department of  
Agriculture

## Henry County, Illinois

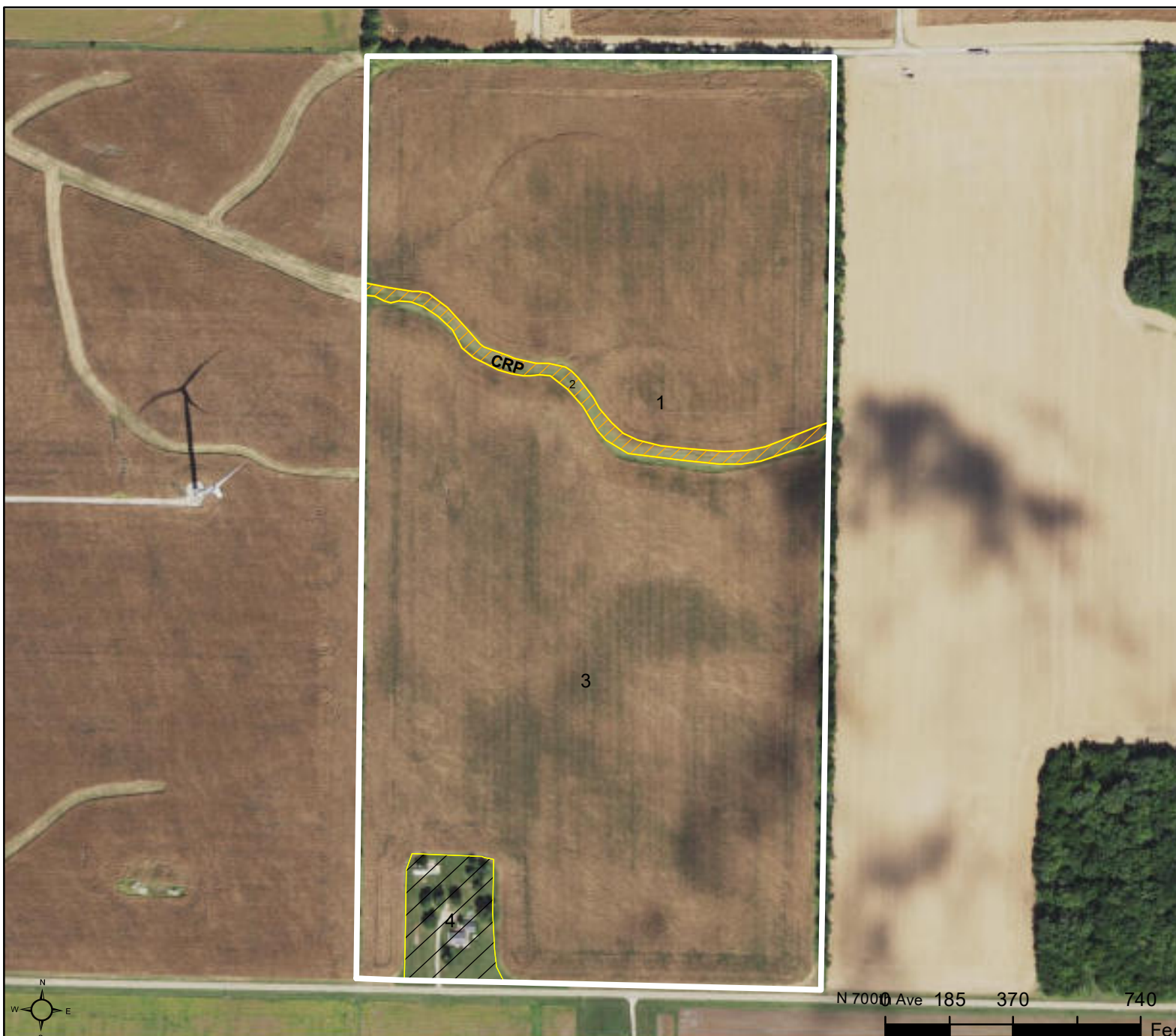
**Farm 7302**

**Tract 8848**

2023 Program Year

CLU	Acres	HEL	Crop
1	29.75	NHEL	
2	1.4	NHEL	CRP
3	50.19	NHEL	
4	2.14	UHEL	NC

Page Cropland Total: 81.34 acres



Map Created December 21, 2022

### Common Land Unit

- Cropland
- Non-Cropland
- CRP

Tract Boundary

### Wetland Determination

- Restricted Use
- Limited Restrictions
- Exempt from Conservation Compliance Provisions

USDA FSA maps are for FSA Program administration only. This map does not represent a legal survey or reflect actual ownership; rather it depicts the information provided directly from the producer and/or the NAIP imagery. The producer accepts the data 'as is' and assumes all risks associated with its use. The USDA Farm Service Agency assumes no responsibility for actual or consequential damage incurred as a result of any user's reliance on this data outside FSA Programs. Wetland identifiers do not represent the size, shape, or specific determination of the area. Refer to your original determination (CPA-026 and attached maps) for exact boundaries and determinations or contact NRCS.

ILLINOIS  
HENRY

Form: FSA-156EZ

See Page 2 for non-discriminatory Statements.



United States Department of Agriculture  
Farm Service Agency

Abbreviated 156 Farm Record

FARM : 7302

Prepared : 10/18/23 11:08 AM CST

Crop Year : 2024

Operator Name : 53-19 INVESTMENT LLC  
CRP Contract Number(s) : 11407  
Recon ID : 17-073-2007-170  
Transferred From : None  
ARCPLC G//F Eligibility : Eligible

Farm Land Data

Farmland	Cropland	DCP Cropland	WBP	EWP	WRP	GRP	Sugarcane	Farm Status	Number Of Tracts
83.48	81.34	81.34	0.00	0.00	0.00	0.00	0.0	Active	1
State Conservation	Other Conservation	Effective DCP Cropland		Double Cropped		CRP	MPL	DCP Ag.Rel. Activity	SOD
0.00	0.00	79.94		0.00		1.40	0.00	0.00	0.00

Crop Election Choice

ARC Individual	ARC County	Price Loss Coverage
None	SOYBN	CORN

DCP Crop Data

Crop Name	Base Acres	CCC-505 CRP Reduction Acres	PLC Yield	HIP
Corn	55.70	0.00	113	
Soybeans	24.00	0.00	39	0
<b>TOTAL</b>	<b>79.70</b>	<b>0.00</b>		

NOTES

Tract Number : 8848

Description : J13 SEC 25 CAMBRIDGE  
FSA Physical Location : ILLINOIS/HENRY  
ANSI Physical Location : ILLINOIS/HENRY  
BIA Unit Range Number :  
HEL Status : NHEL: No agricultural commodity planted on undetermined fields  
Wetland Status : Wetland determinations not complete  
WL Violations : None  
Owners : 53-19 INVESTMENT LLC  
Other Producers : None  
Recon ID : 17-073-2007-169

Tract Land Data

Farm Land	Cropland	DCP Cropland	WBP	EWP	WRP	GRP	Sugarcane
83.48	81.34	81.34	0.00	0.00	0.00	0.00	0.0

Abbreviated 156 Farm Record

Tract 8848 Continued ...

State Conservation	Other Conservation	Effective DCP Cropland	Double Cropped	CRP	MPL	DCP Ag. Rel Activity	SOD
0.00	0.00	79.94	0.00	1.40	0.00	0.00	0.00

DCP Crop Data

Crop Name	Base Acres	CCC-505 CRP Reduction Acres	PLC Yield
Corn	55.70	0.00	113
Soybeans	24.00	0.00	39
TOTAL	79.70	0.00	

NOTES

*In accordance with Federal civil rights law and U.S. Department of Agriculture (USDA) civil rights regulations and policies, the USDA, its Agencies, offices, and employees, and institutions participating in or administering USDA programs are prohibited from discriminating based on race, color, national origin, religion, sex, gender identity (including gender expression), sexual orientation, disability, age, marital status, family/parental status, income derived from a public assistance program, political beliefs, or reprisal or retaliation for prior civil rights activity, in any program or activity conducted or funded by USDA (not all bases apply to all programs). Remedies and complaint filing deadlines vary by program or incident.*

*Persons with disabilities who require alternative means of communication for program information (e.g., Braille, large print, audiotape, American Sign Language, etc.) should contact the responsible Agency or USDA's TARGET Center at (202) 720-2600 (voice and TTY) or contact USDA through the Federal Relay Service at (800) 877-8339. Additionally, program information may be made available in languages other than English.*

*To file a program discrimination complaint, complete the USDA Program Discrimination Complaint Form, AD-3027, found online at [http://www.ascr.usda.gov/complaint\\_filing\\_cust.html](http://www.ascr.usda.gov/complaint_filing_cust.html) and at any USDA office or write a letter addressed to USDA and provide in the letter all of the information requested in the form. To request a copy of the complaint form, call (866) 632-9992. Submit your completed form or letter to USDA by: (1) mail: U.S. Department of Agriculture Office of the Assistant Secretary for Civil Rights 1400 Independence Avenue, SW Washington, D.C. 20250-9410; (2) fax: (202) 690-7442; or (3) e-mail: [program.intake@usda.gov](mailto:program.intake@usda.gov). USDA is an equal opportunity provider, employer, and lender.*